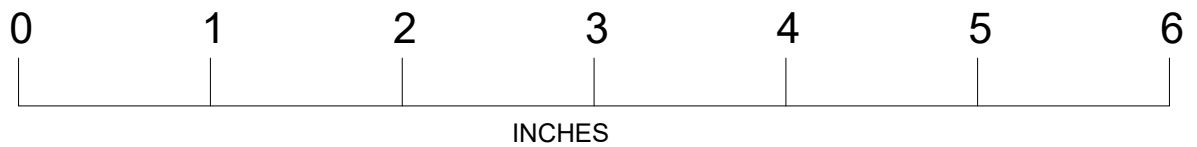
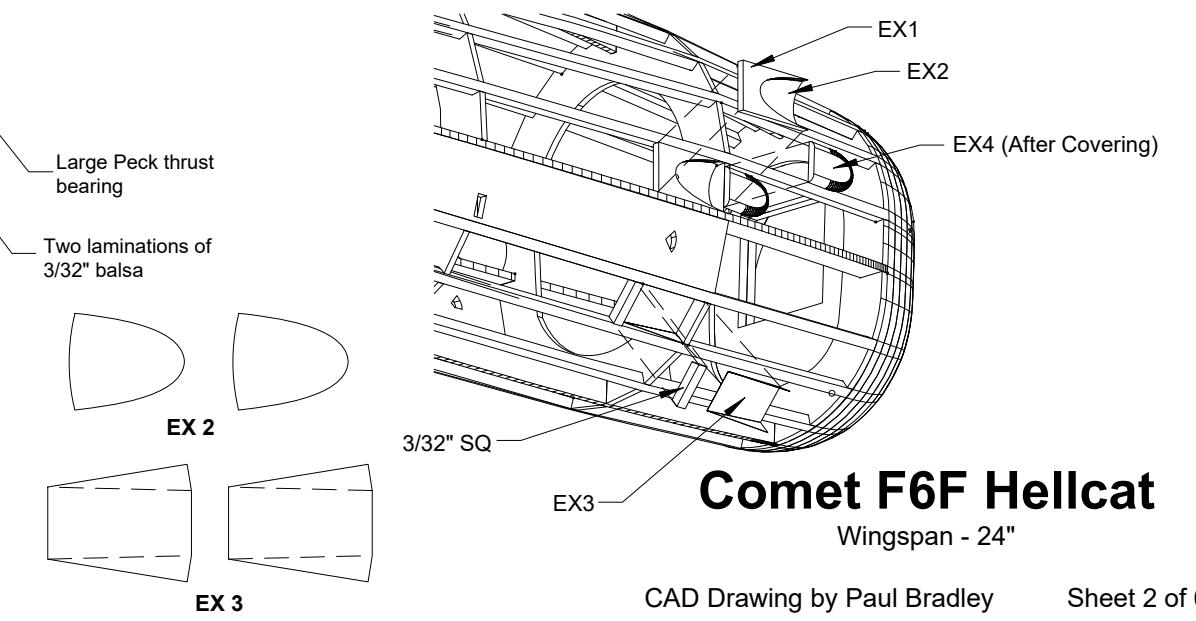
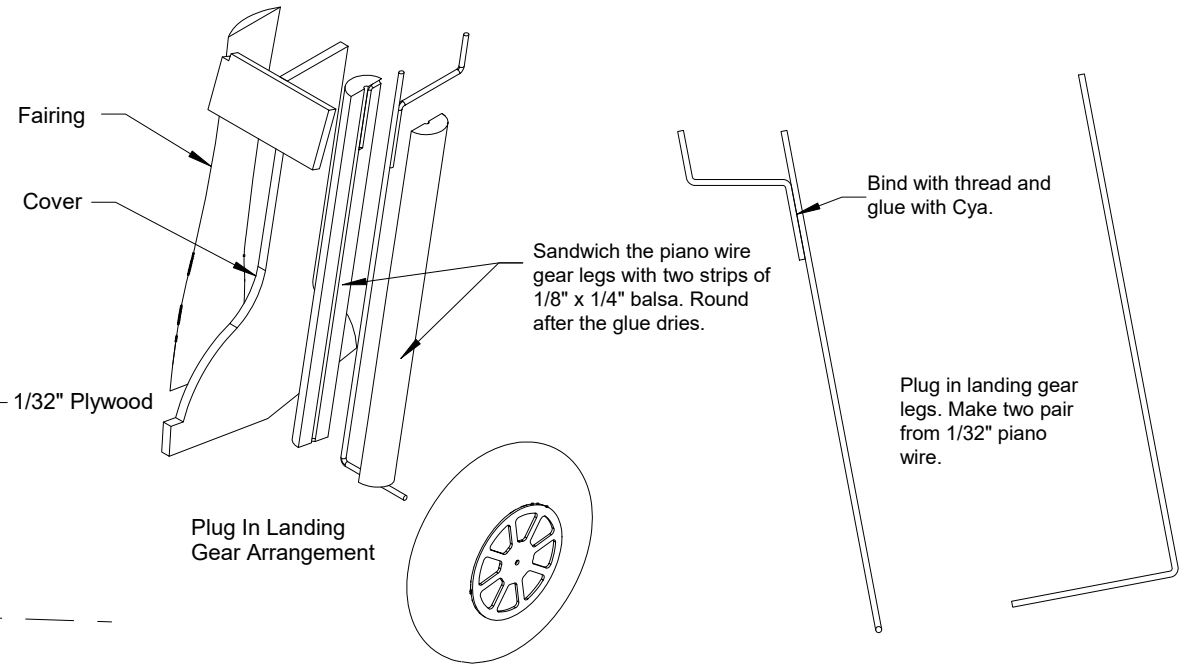
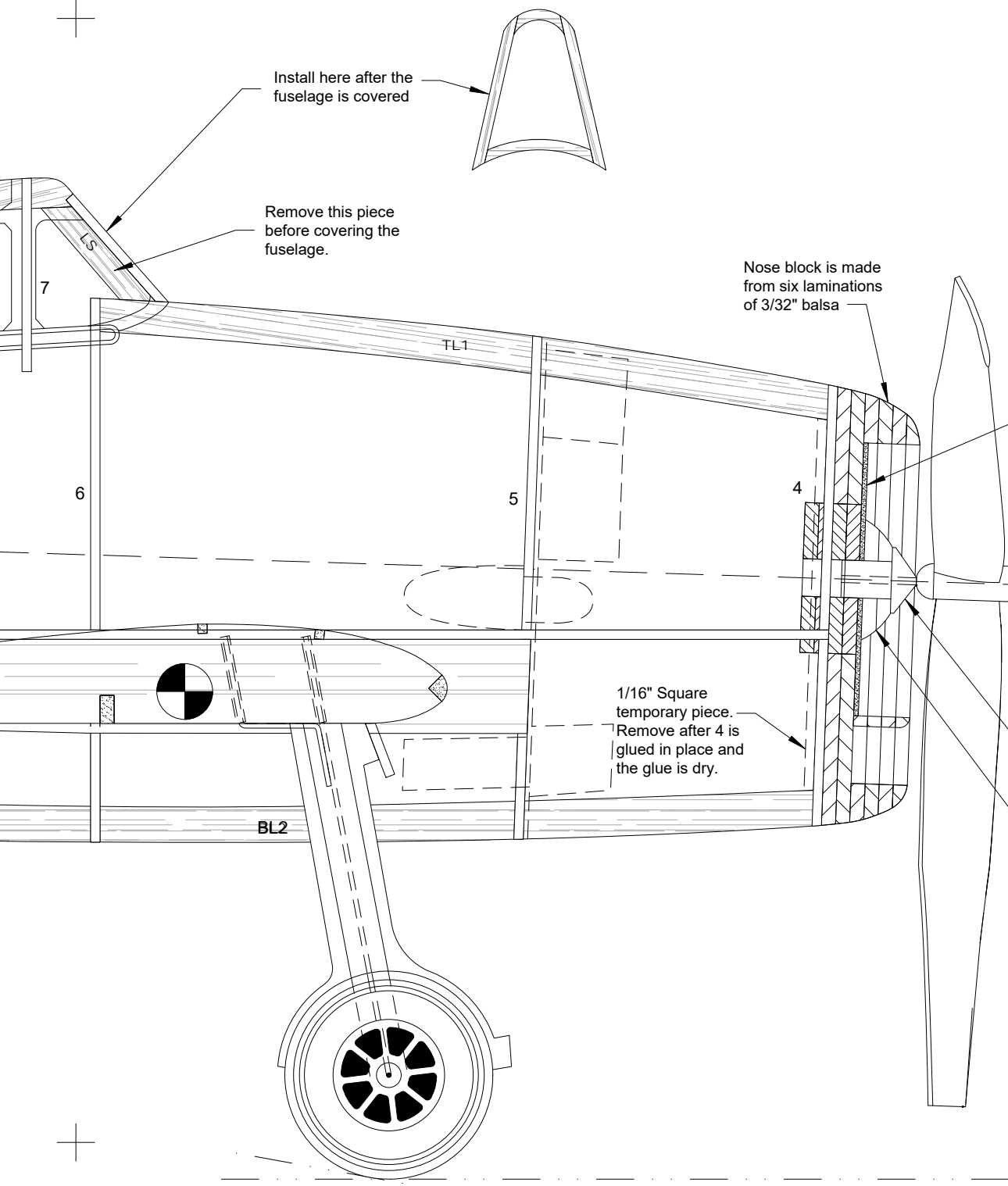
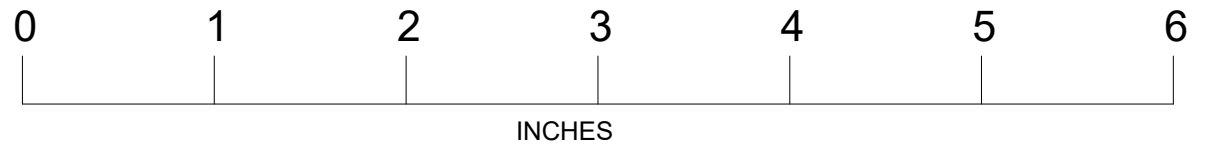


Comet F6F Hellcat

Wingspan - 24"





Comet F6F Hellcat

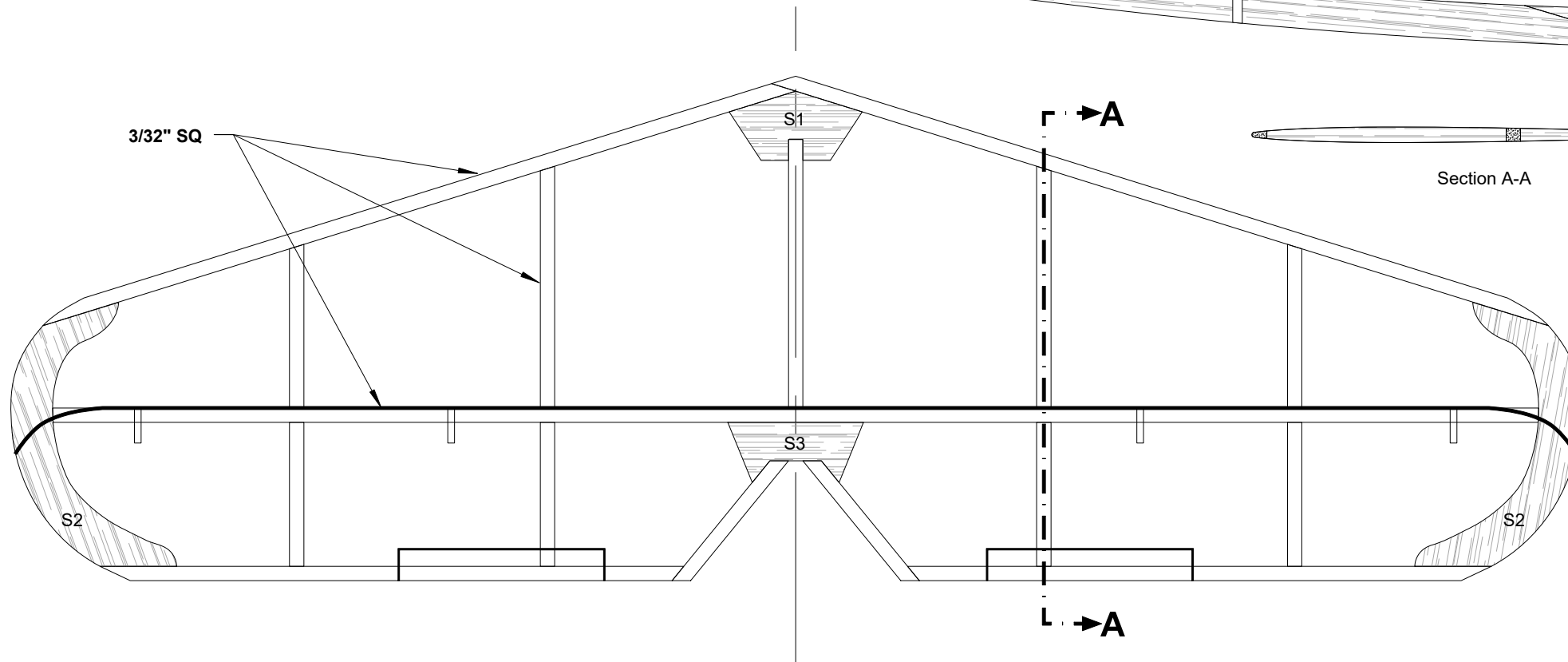
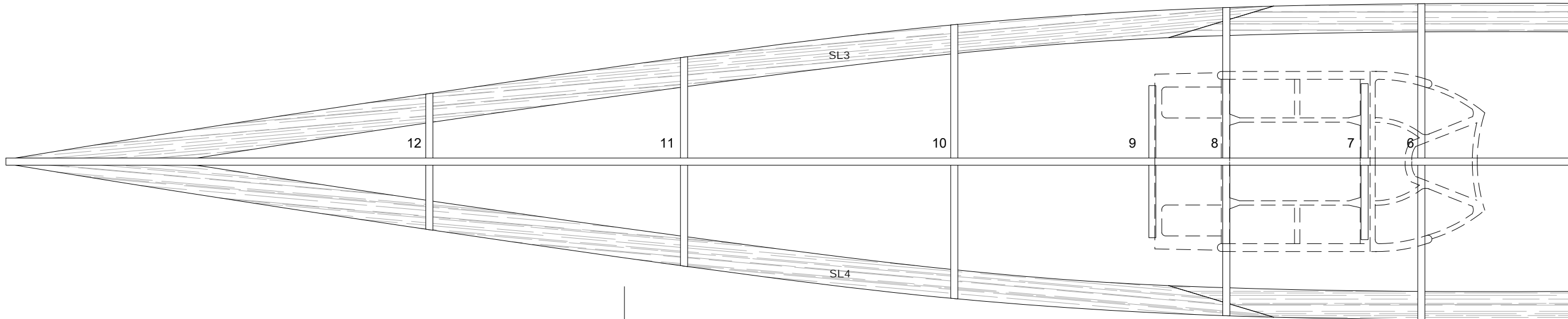
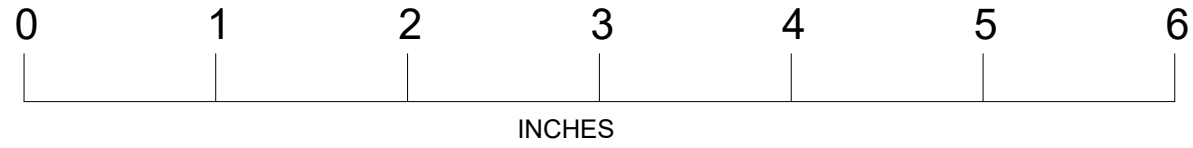
Wingspan - 24"

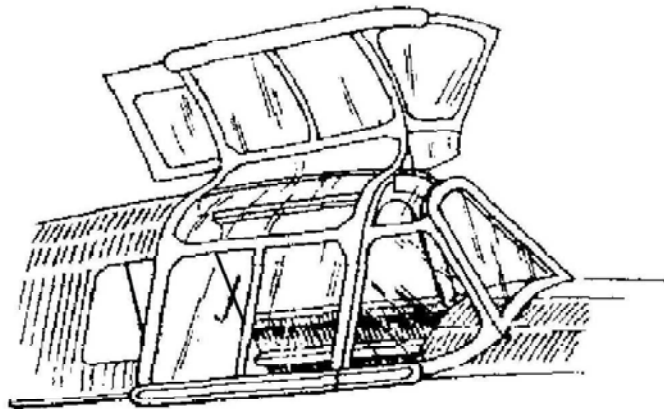
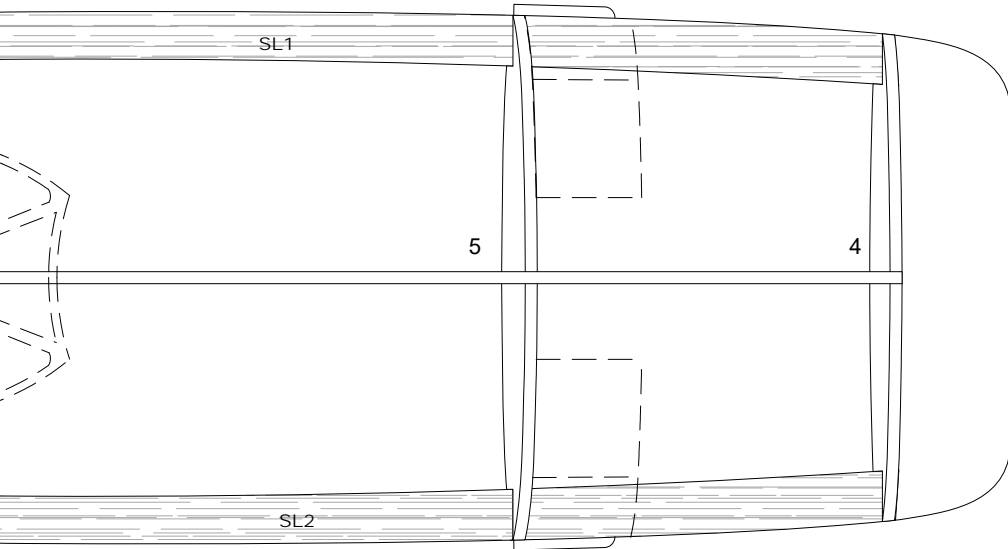
Comet F6F Hellcat

Wingspan - 24"

CAD Drawing by Paul Bradley

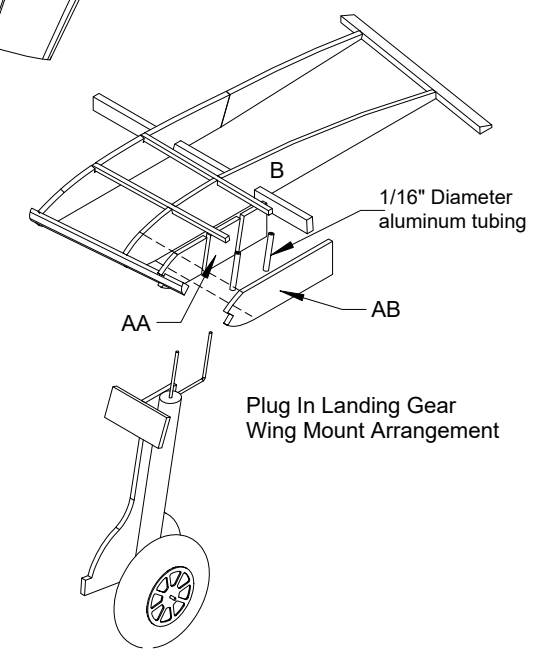
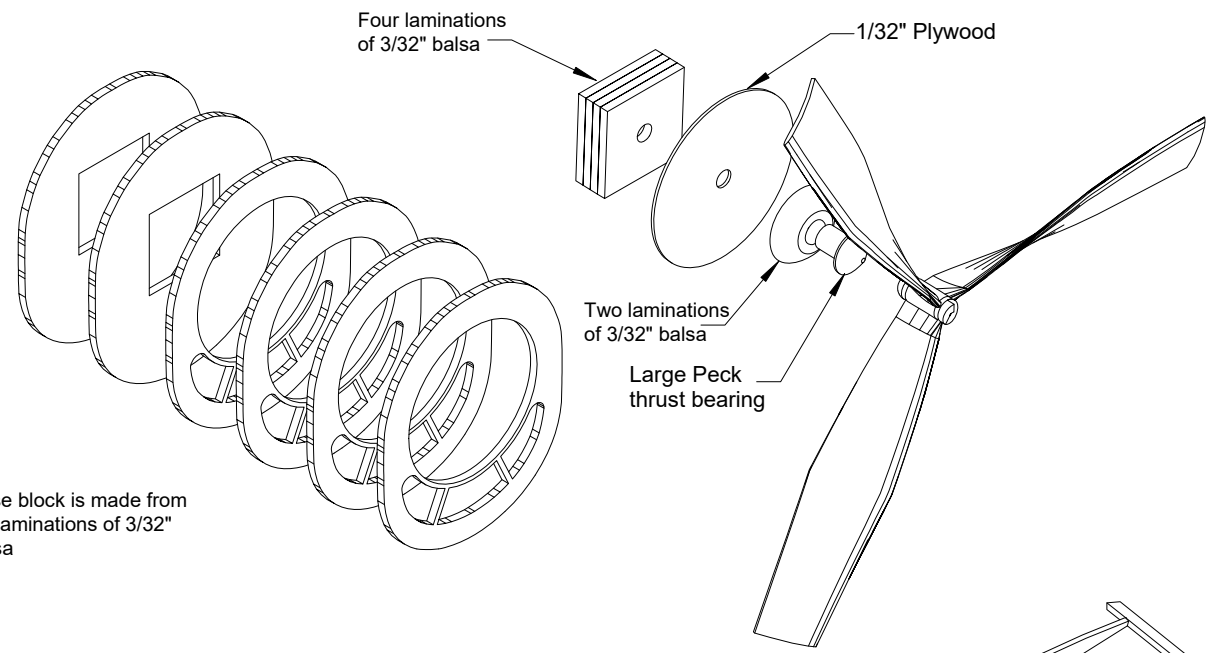
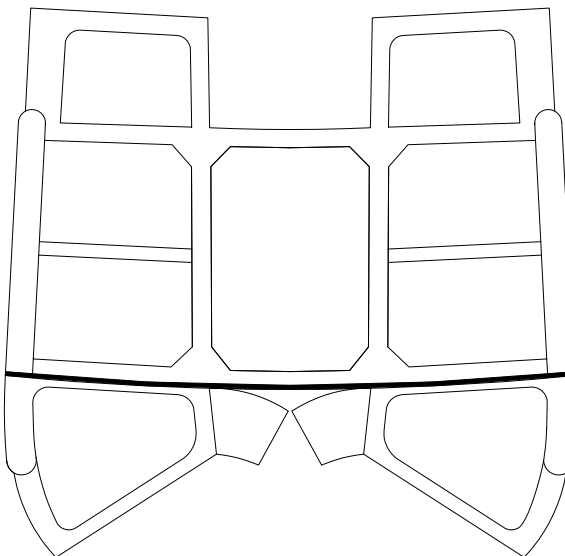
Sheet 3 of 6





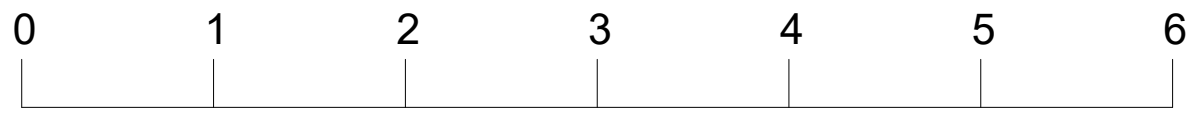
Canopy Arrangement

Nose block is made from six laminations of 3/32" balsa



Comet F6F Hellcat

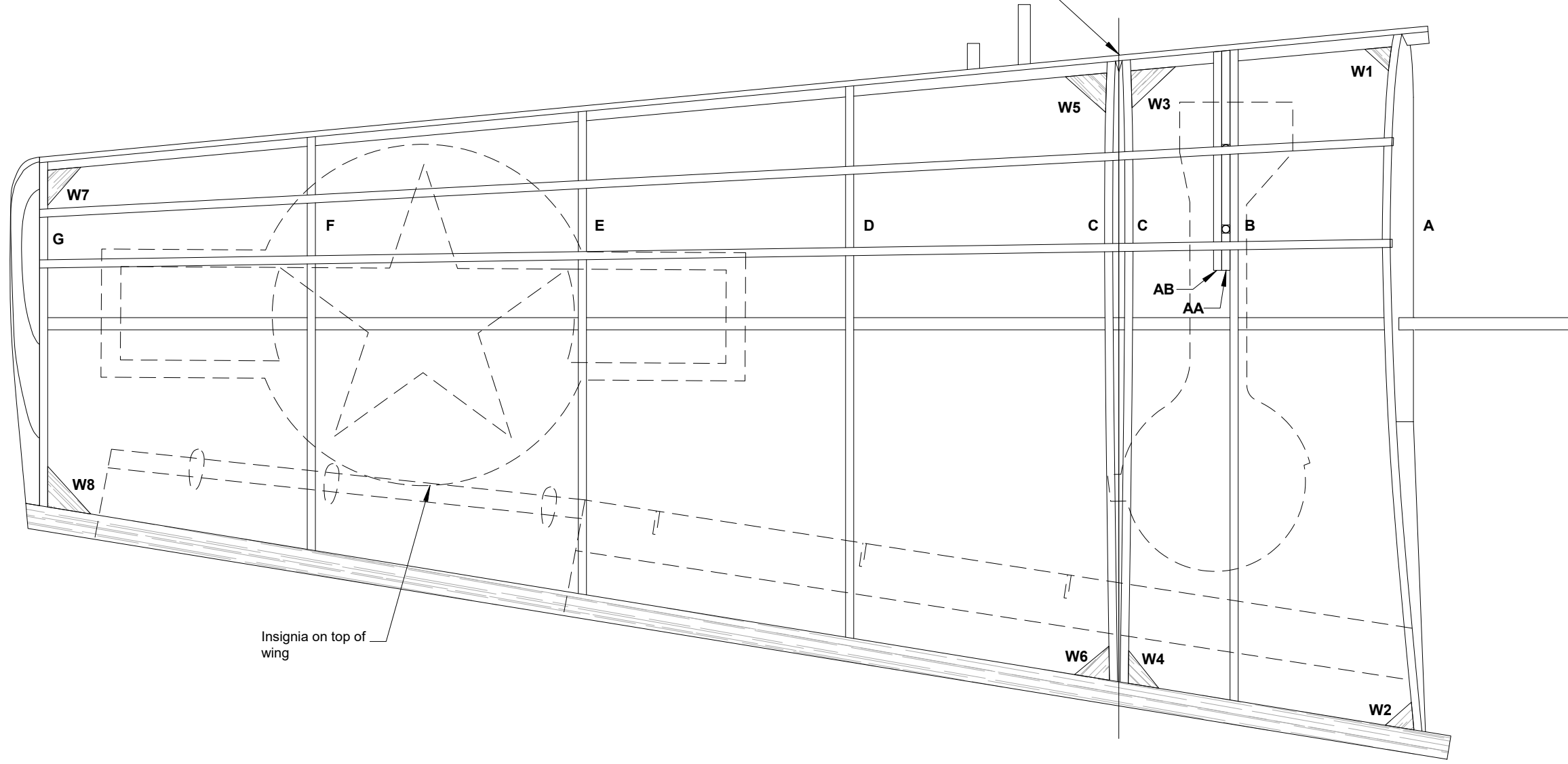
Wingspan - 24"



INCHES



After shaping the LE and TE, cut the panel apart here. Sand the face of each rib C to be smooth.



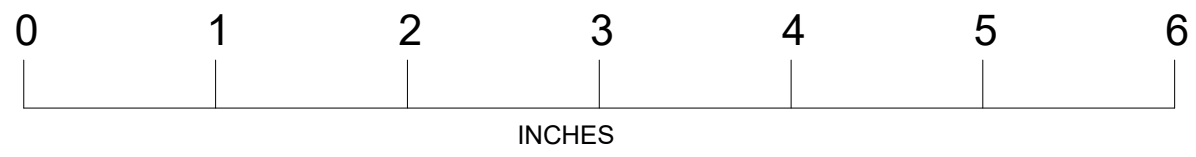
Insignia on top of wing

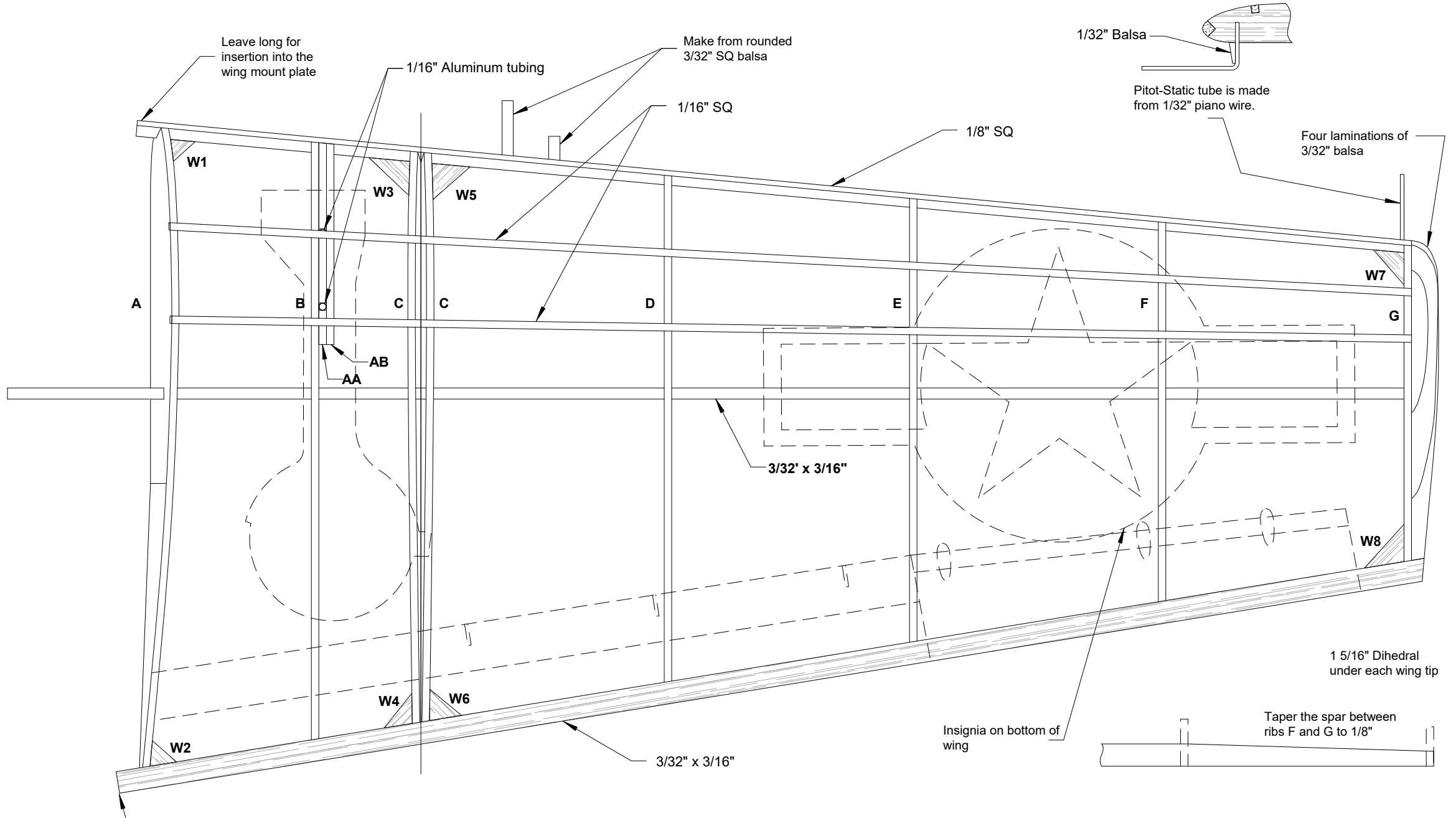
Comet F6F Hellcat

Wingspan - 24"

CAD Drawing by Paul Bradley

Sheet 5 of 6





Comet F6F Hellcat

Wingspan - 24"



INCHES

