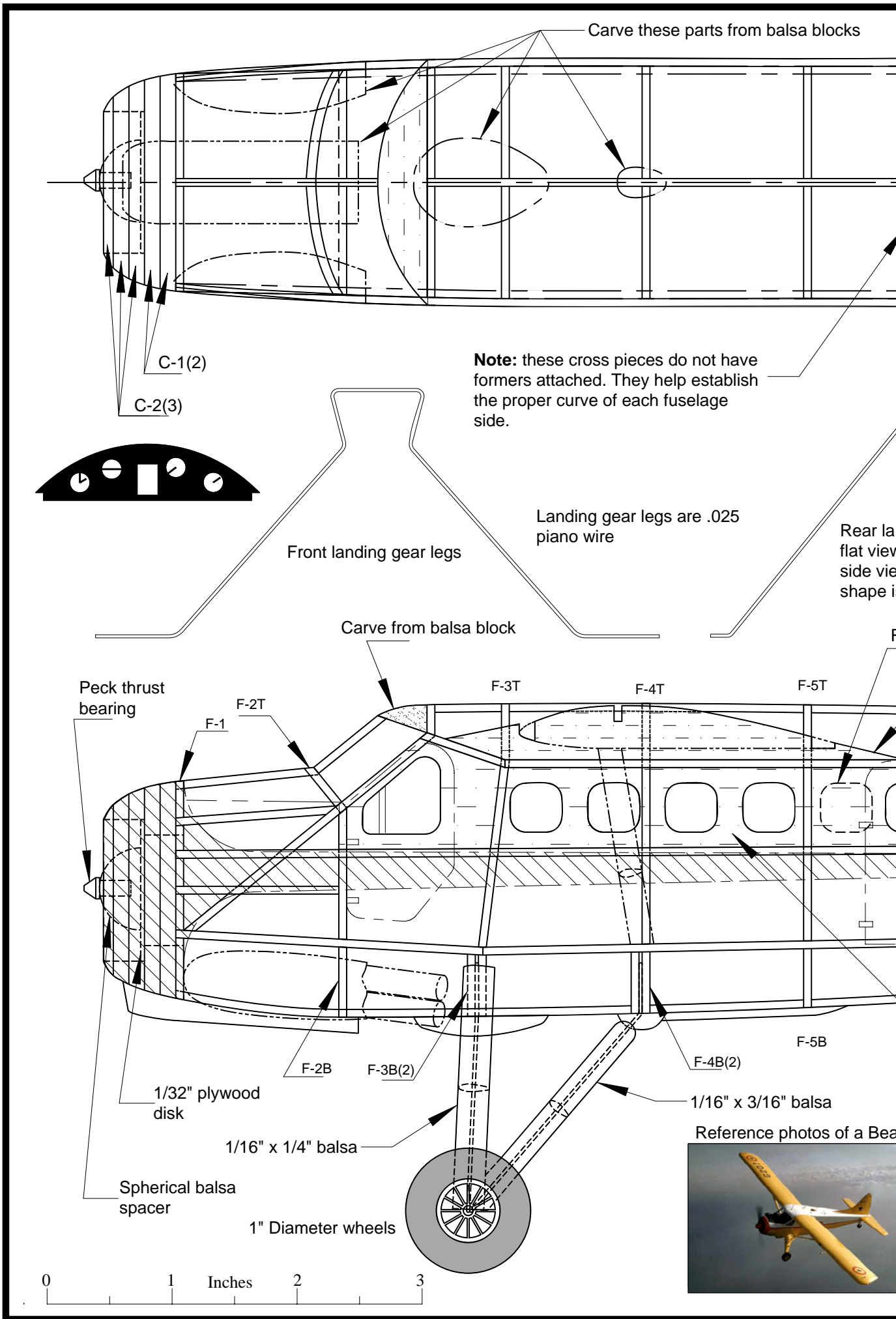
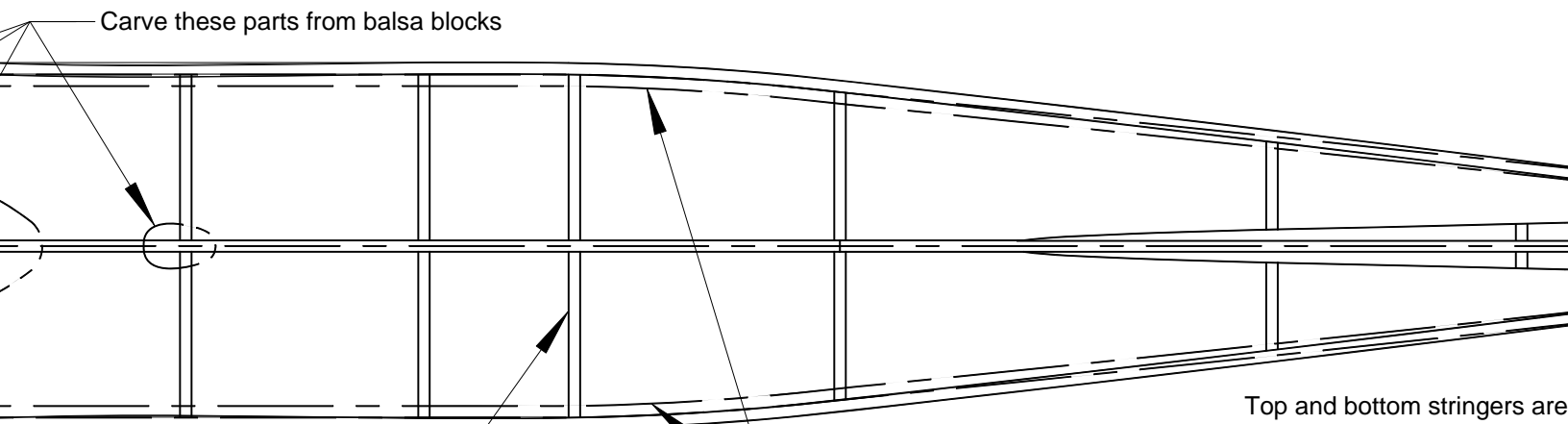
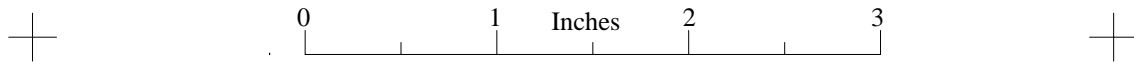


0 1 Inches 2 3



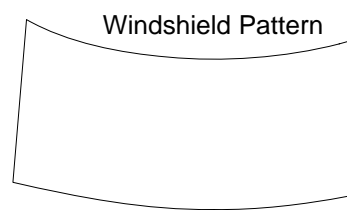
0





these cross pieces do not have pins attached. They help establish the upper curve of each fuselage

Bottom longeron



Fin/Rudder outline is two laminations of 1/32" x 1/16"

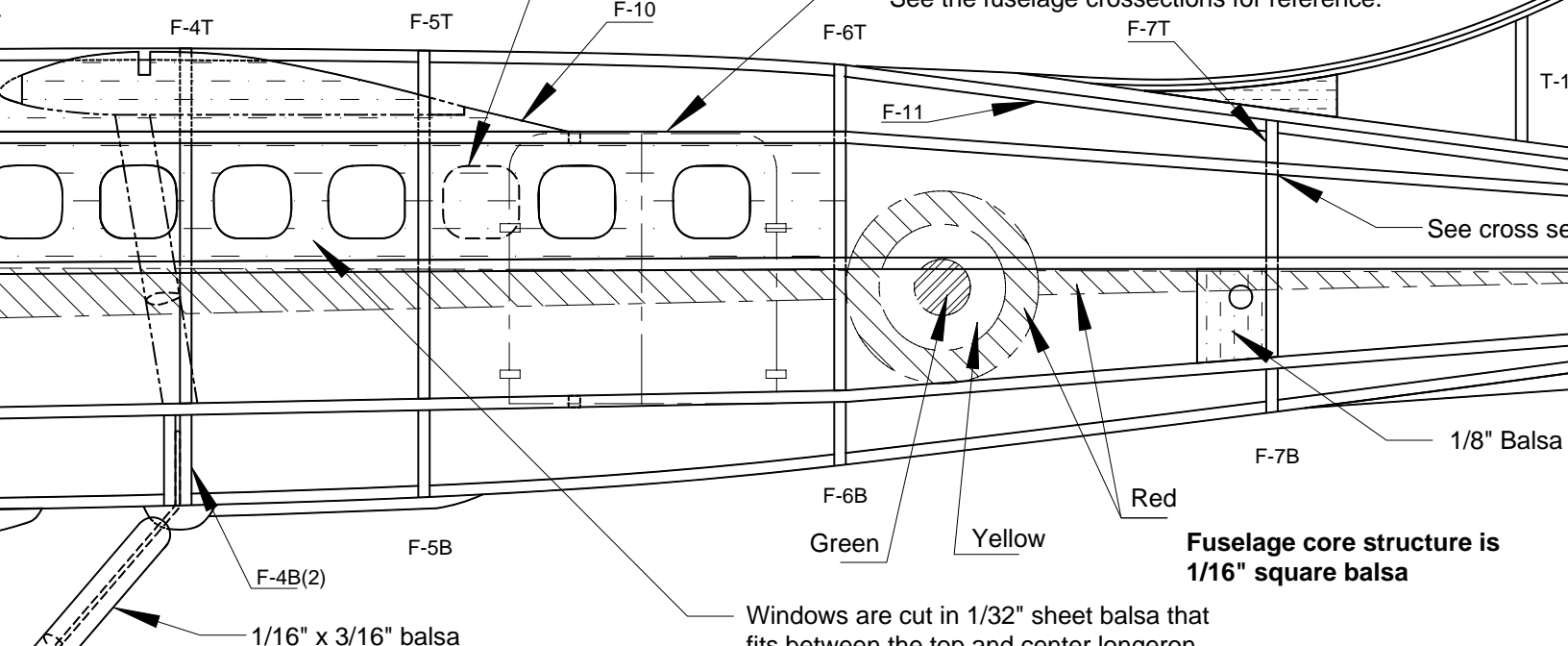
Landing gear legs are .025 piano wire

Rear landing gear legs - flat view. Bend to the side view after basic shape is formed.

Rear landing gear legs side view

Right side window location

**Note:** This longeron sits on top of the uprights. See the fuselage cross sections for reference.

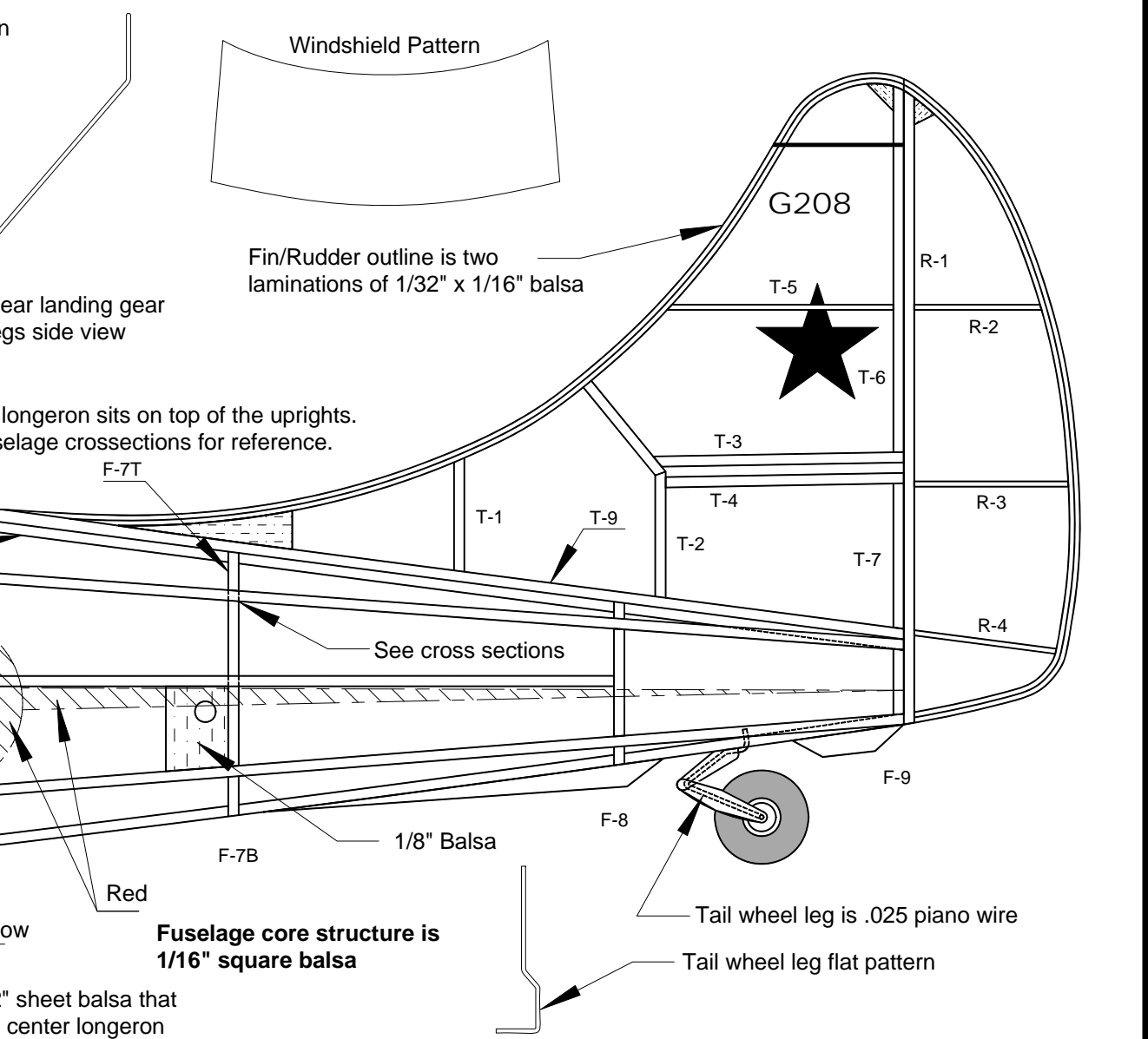
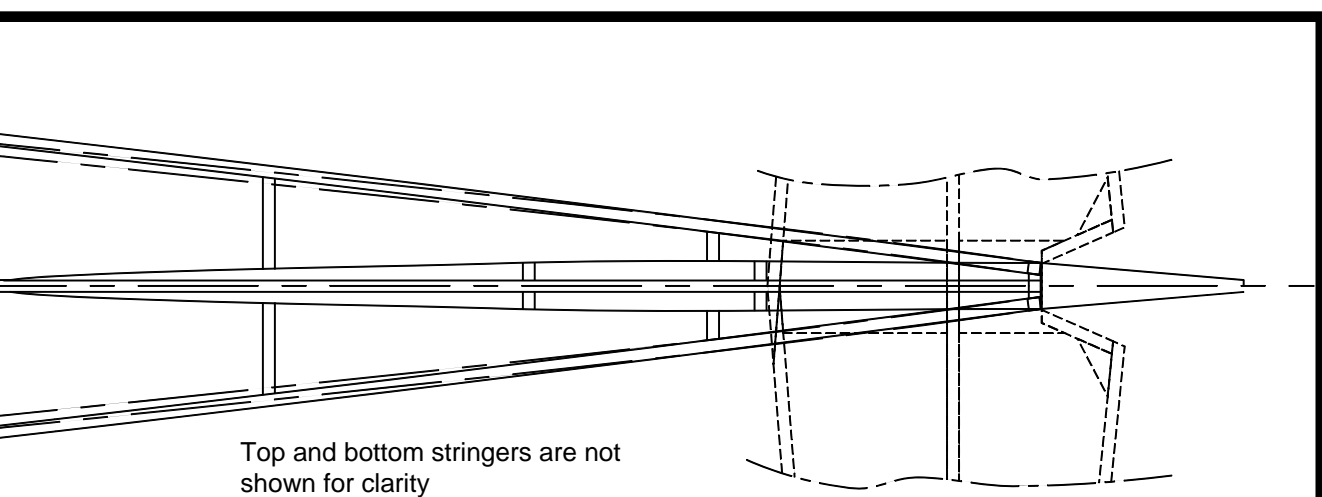


Reference photos of a Beaver in the Ghana colors



**Color and Marking Notes:**

Markings are those of the Ghana Air Force. Base color is orange yellow. Fuselage has a red trim stripe that includes the nose. The fuselage is white above the red trim stripe. Matt black anti glare panel forward of the windshield. Star on the fin and numerals are black. The national insignia green at the center, then orange yellow, and red for the outer ring.



**Paint and Marking Notes:**  
 Colors are those of the Ghana Air Force. Base color is yellow. Fuselage has a red trim stripe that includes the star. The fuselage is white above the red trim stripe. Black anti glare panel forward of the windshield. Star in the center, then orange yellow, and red for the wings.

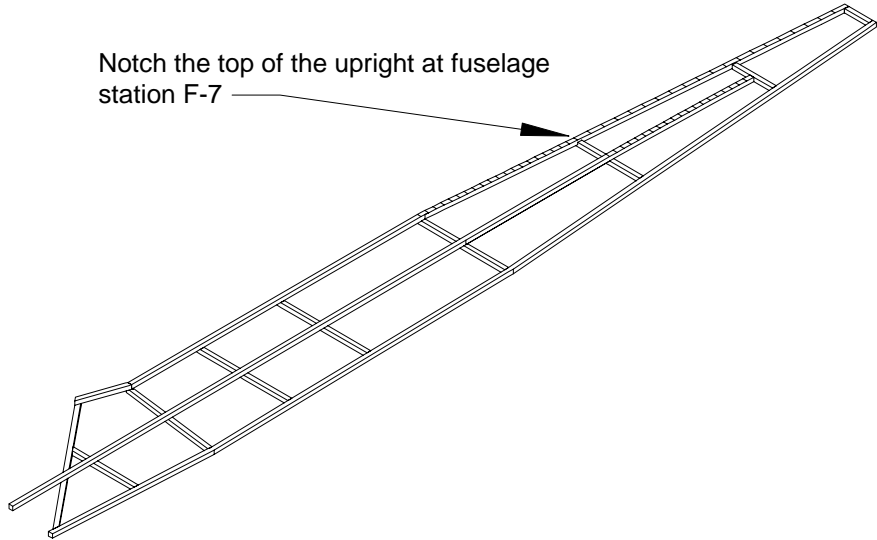
<h2>DeHavilland Otter</h2> <p>21.5" Span Rubber Power Scale Model</p> <p>Original Design by Pres Bruning - Nov. '74</p> <p>CAD Drawing by Paul Bradley - June 2010</p> <p style="text-align: right;">Sheet 1 of 5</p>
---

0 1 Inches 2 3

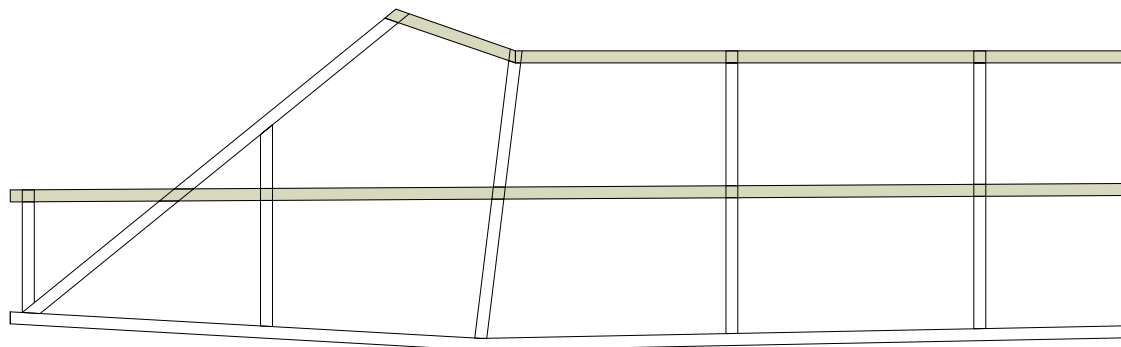
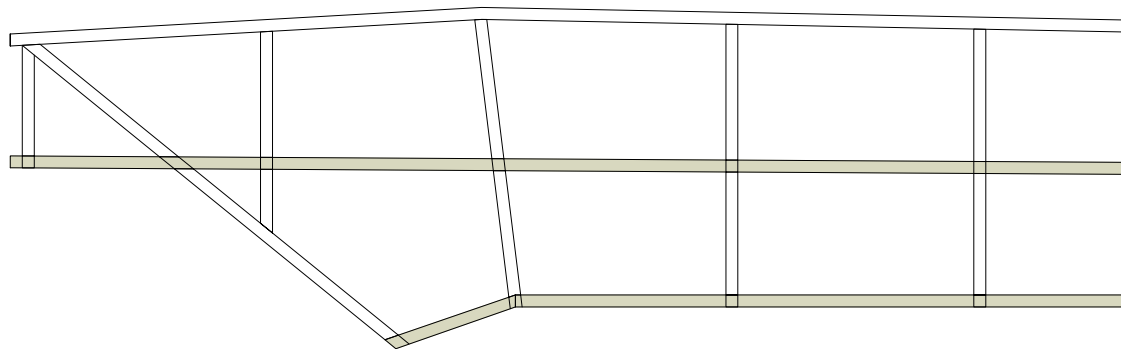
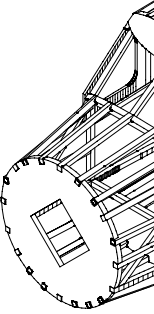


0

Notch the top of the upright at fuselage station F-7



When laying out each fuselage side please note that the top longeron rests on top of the uprights from station F-7 forward. At station F-7 the upright is notched to one half it's depth at the top. The top longeron is flush with the uprights at stations F-8 and F-9. The center stringer/longeron rests on top of the uprights from station F-7 forward. It is flush with the upright at station F-8 where it ends.



F-2

F-3

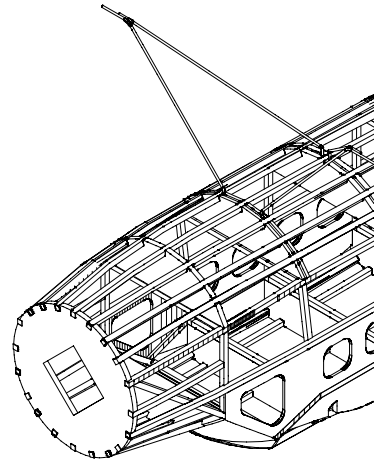
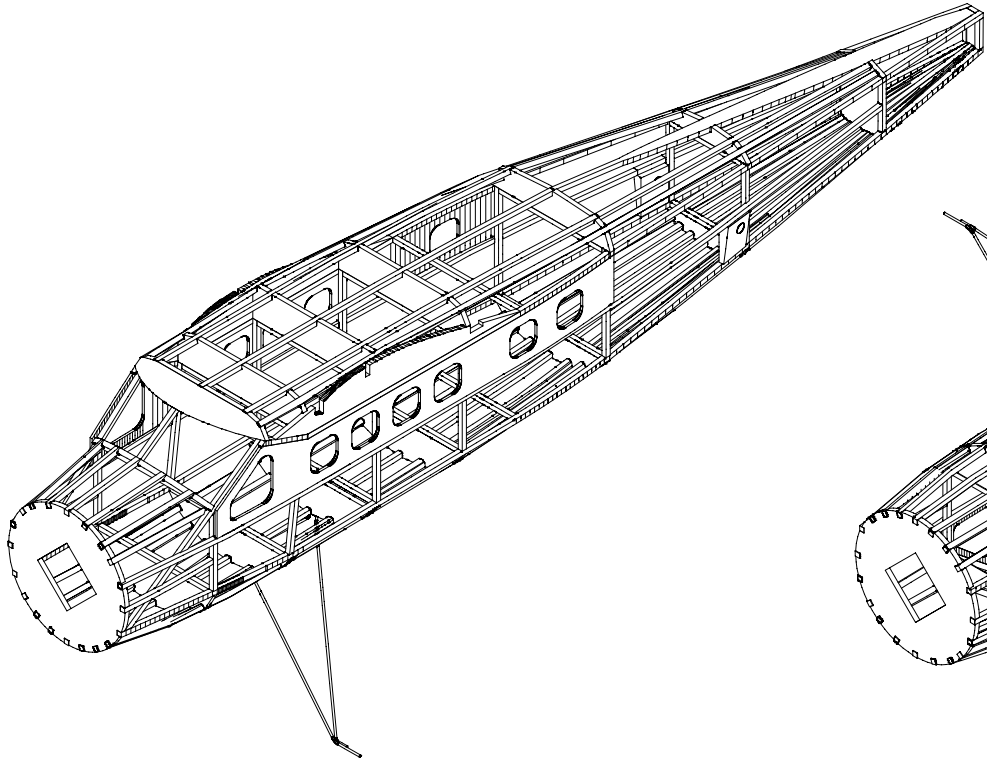
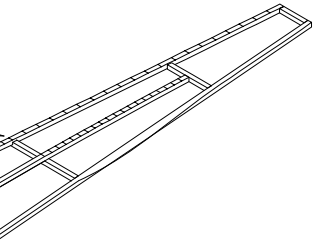
F-4

F-5

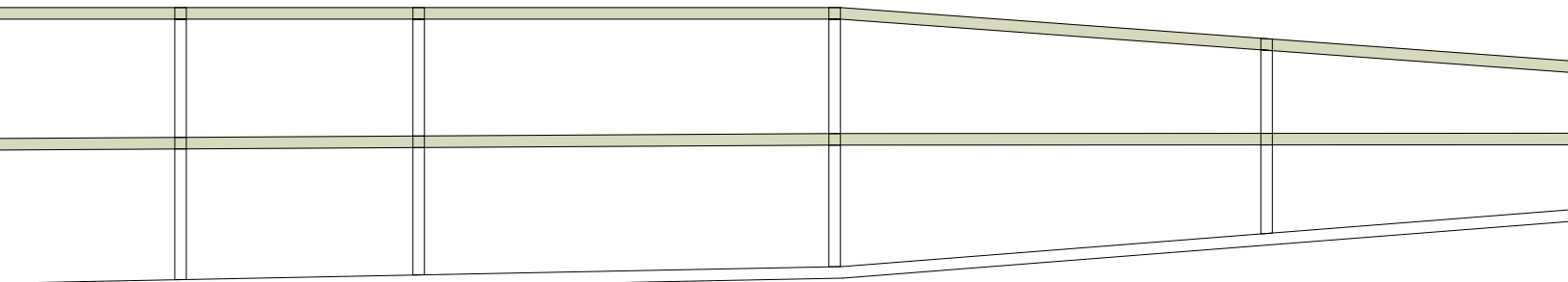
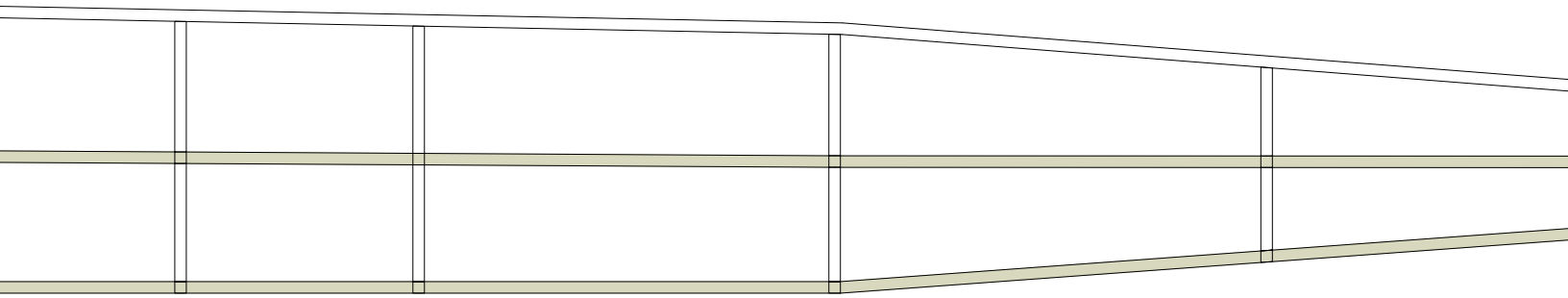




0 1 Inches 2 3



that the top longeron rests on  
F-7 the upright is notched to  
with the uprights at stations  
of the uprights from station  
where it ends.



F-4

F-5

F-6

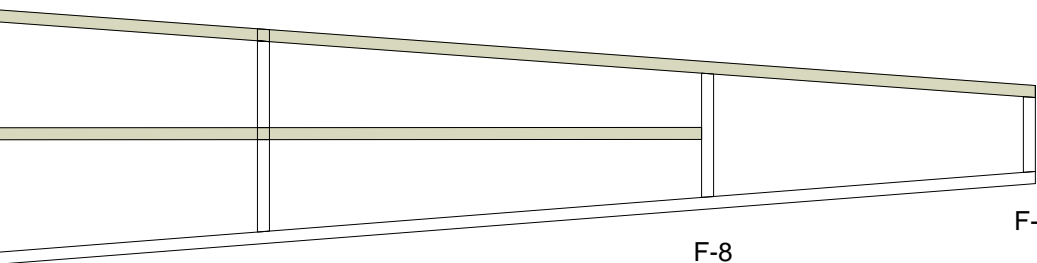
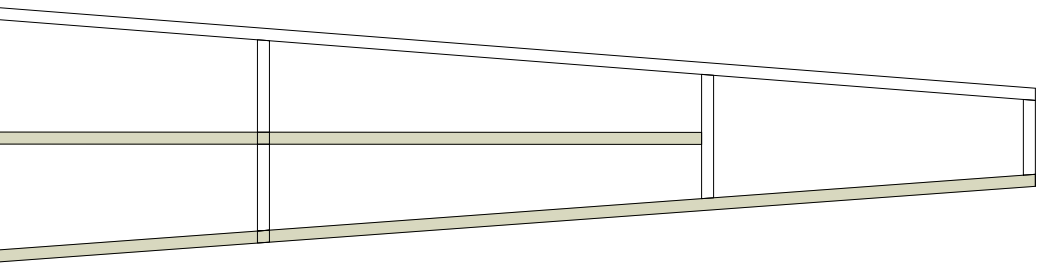
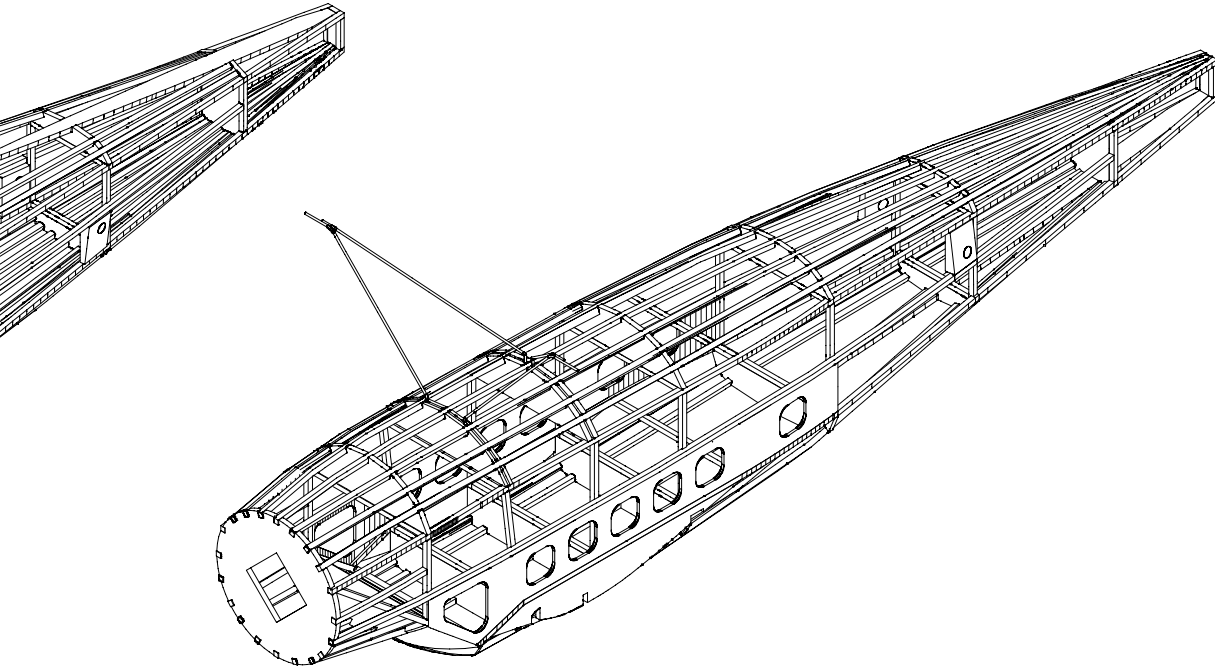
F-7



3



0 1 Inches 2 3



F-7

F-8

F-9

### DeHavilland Otter

21.5" Span Rubber Power Scale Model  
Original Desgin by Pres Bruning - Nov. '74  
CAD Drawing by Paul Bradley - June 2010

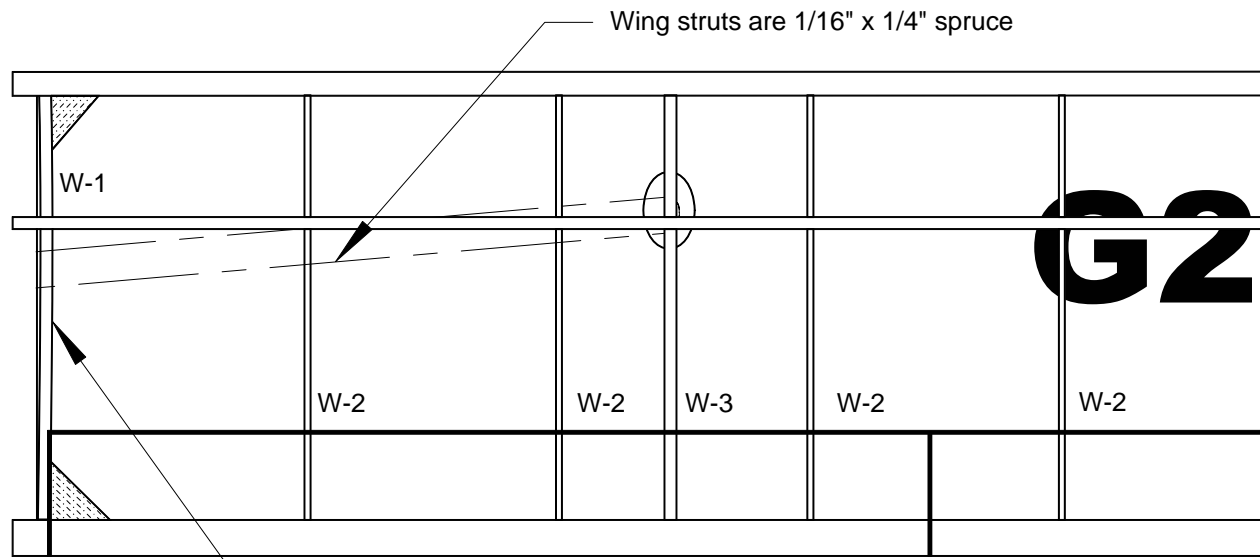
Sheet 2 of 5



0 1 Inches 2 3

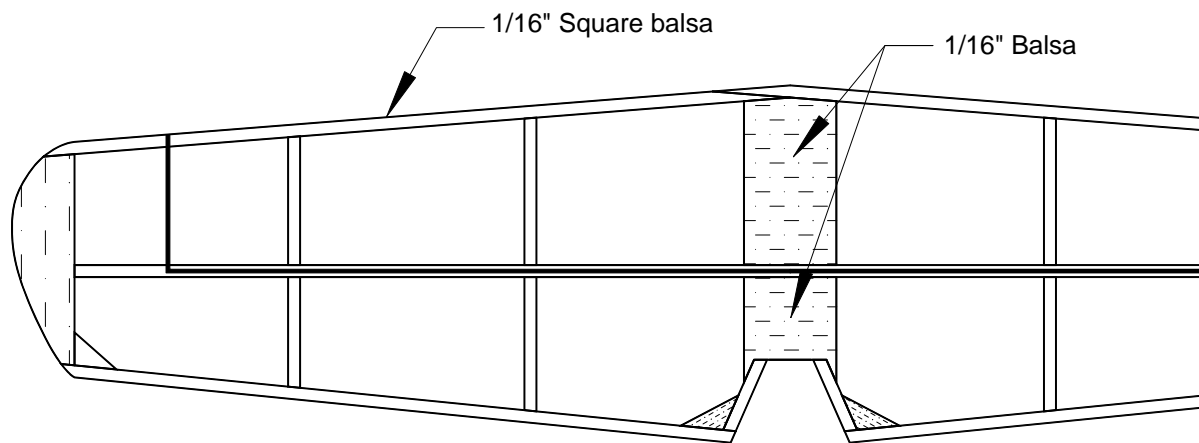
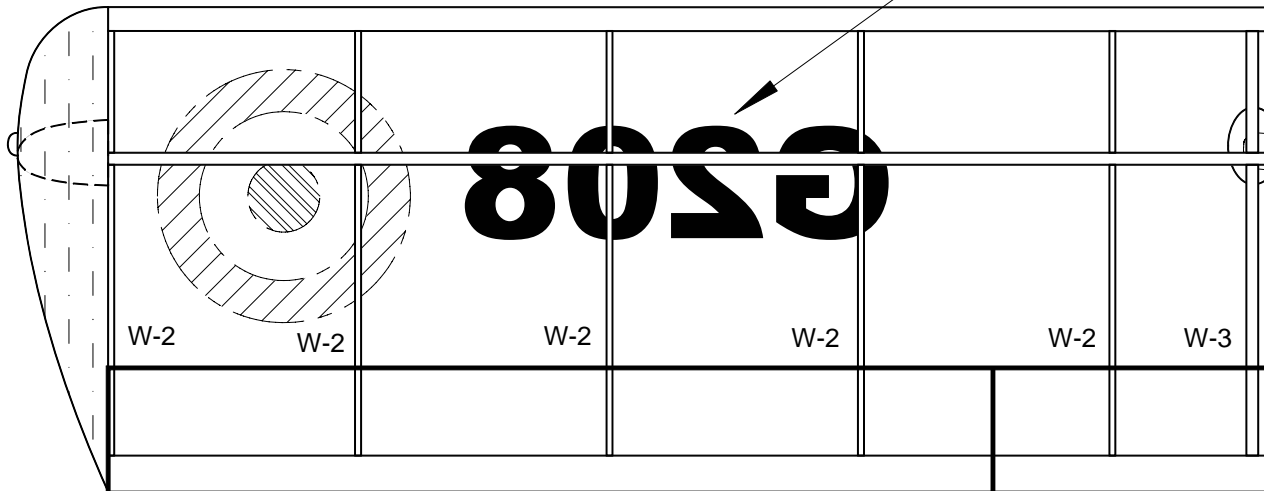


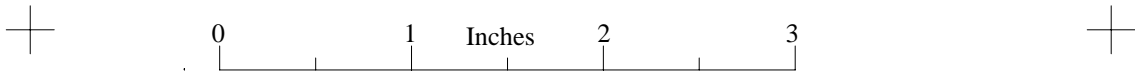
0



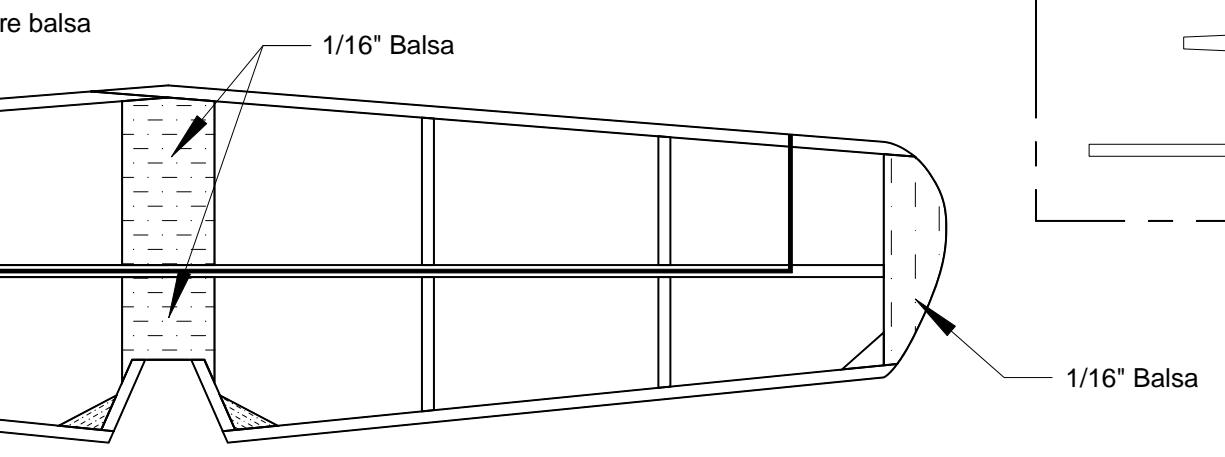
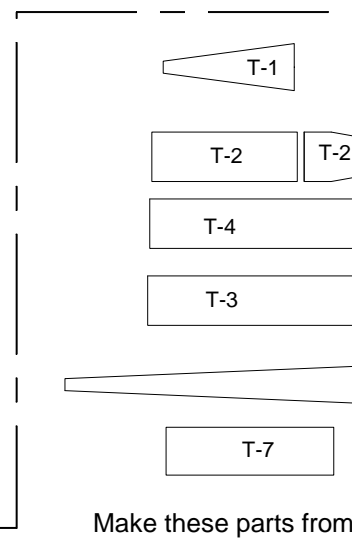
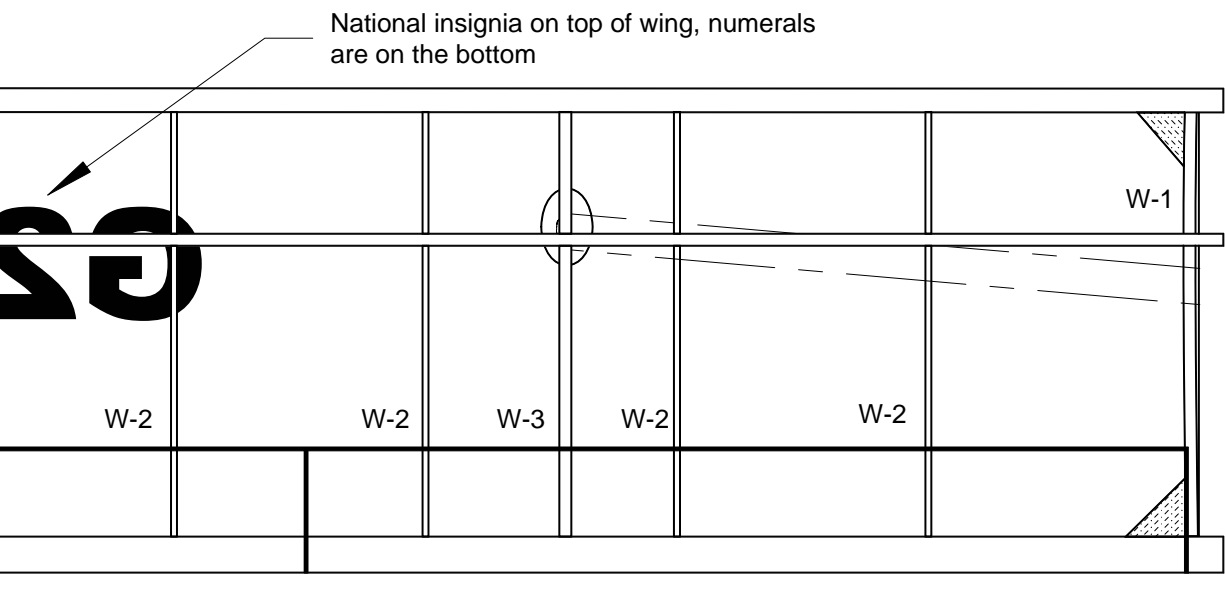
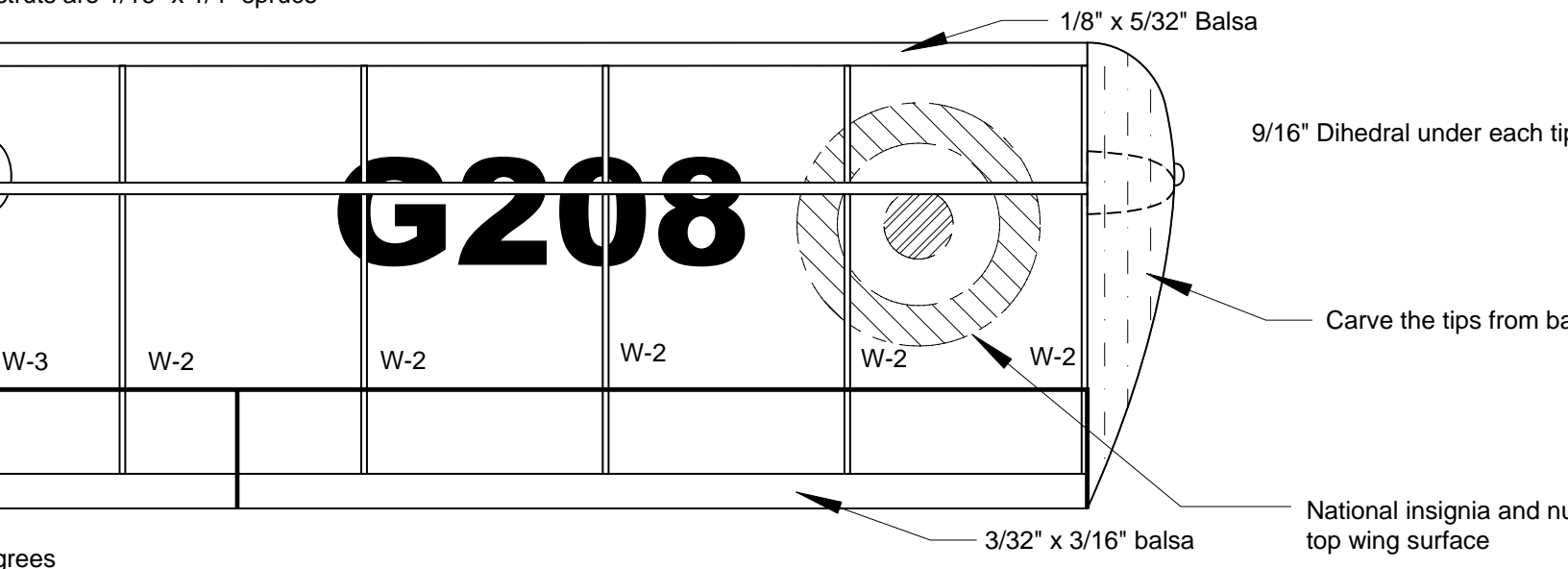
**Note:** Root rib is slanted 3 degrees to accomodate dihedral angle

National insignia on top are on the bottom





struts are 1/16" x 1/4" spruce



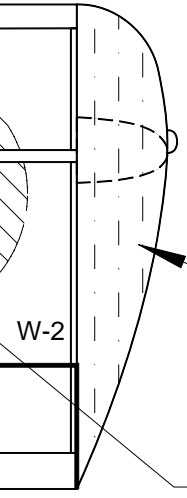
Wing strut mounting pad. from 1/16" balsa.





0 1 2 3 Inches

1/8" x 5/32" Balsa

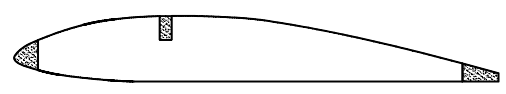


9/16" Dihedral under each tip

Carve the tips from balsa blocks

National insignia and numerals are on top wing surface

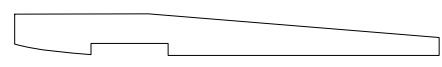
3/32" x 3/16" balsa



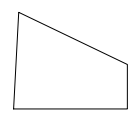
Wing cross section



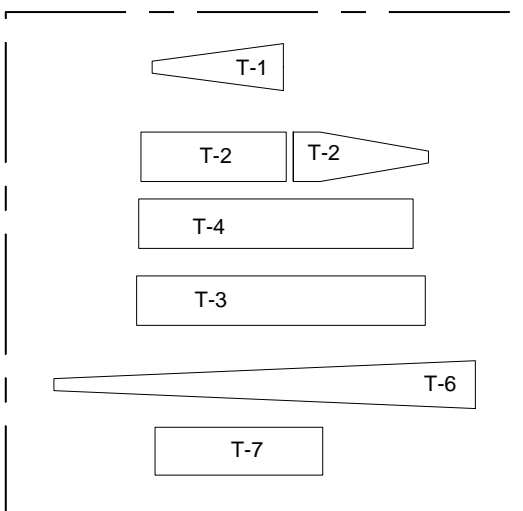
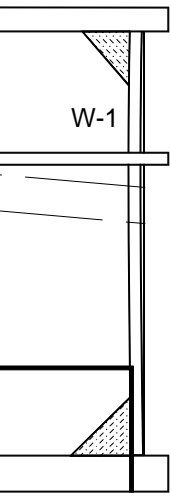
W-1 (2 1/16" balsa)  
W-2 (14 1/32" balsa)



W-3 (2 1/16" balsa)

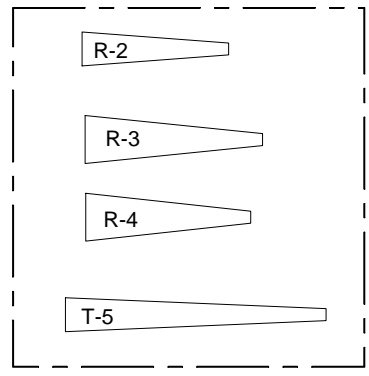


Wing root rib angle guide



Make these parts from 1/16" balsa

Make this set of parts from 1/32" balsa



R-1



T-9

1/16" Balsa



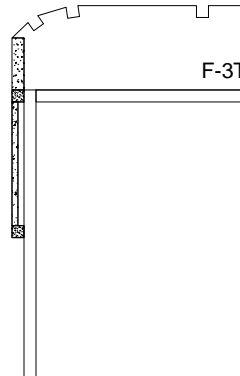
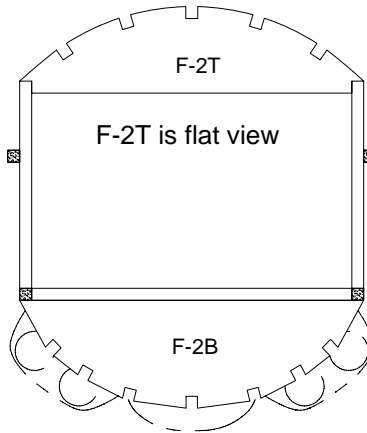
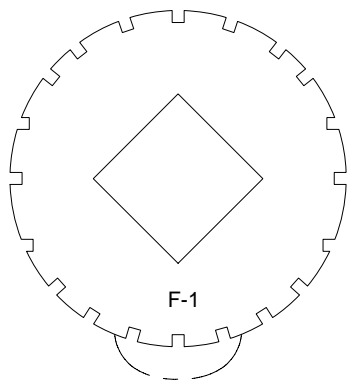
Wing strut mounting pad. Make two from 1/16" balsa.

### DeHavilland Otter

21.5" Span Rubber Power Scale Model  
Original Desgin by Pres Bruning - Nov. '74  
CAD Drawing by Paul Bradley - June 2010

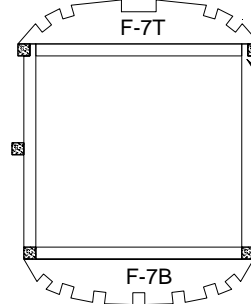
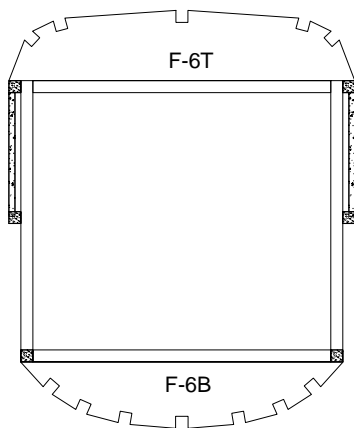
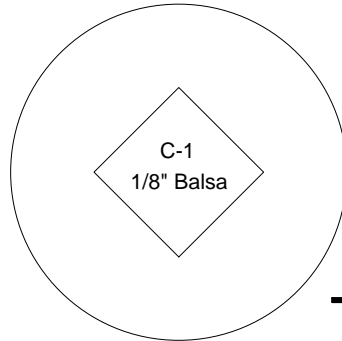
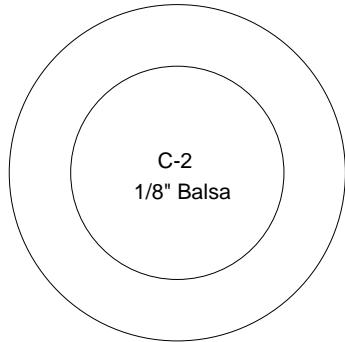


0 1 2 3  
Inches

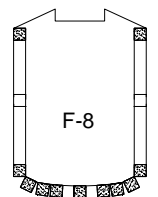


F-3T

F-3B



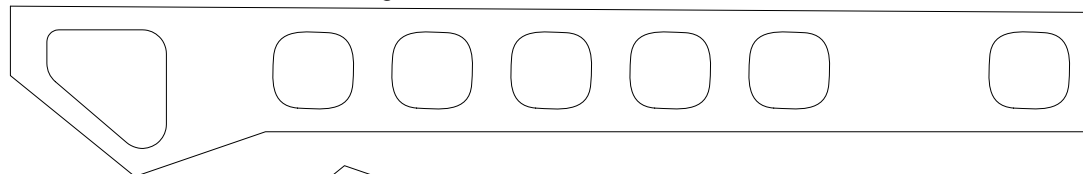
**Note:** Upright at station F at the top to 1/2 its depth



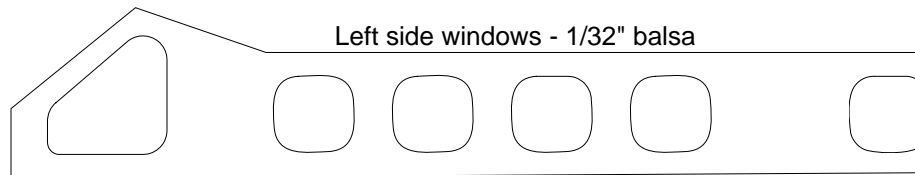
F-8

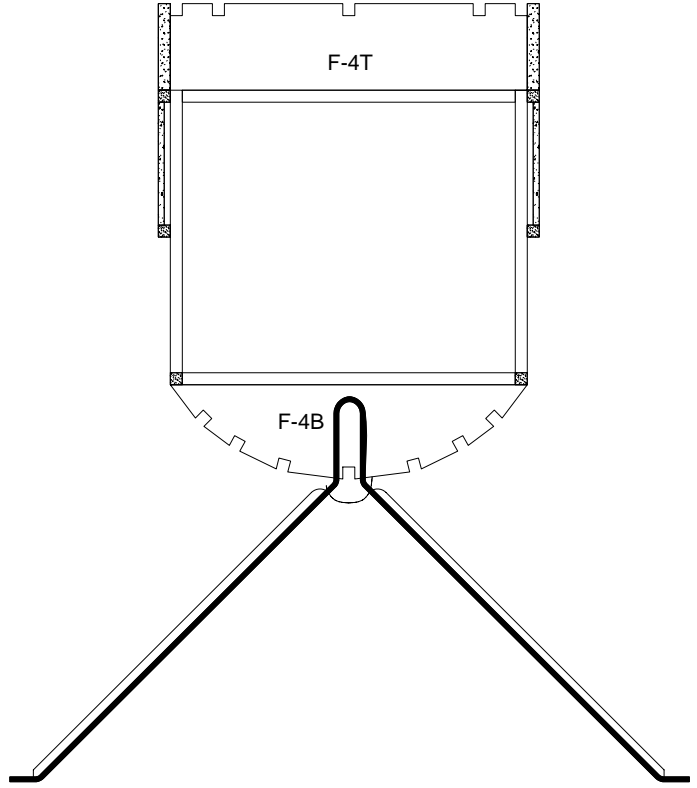
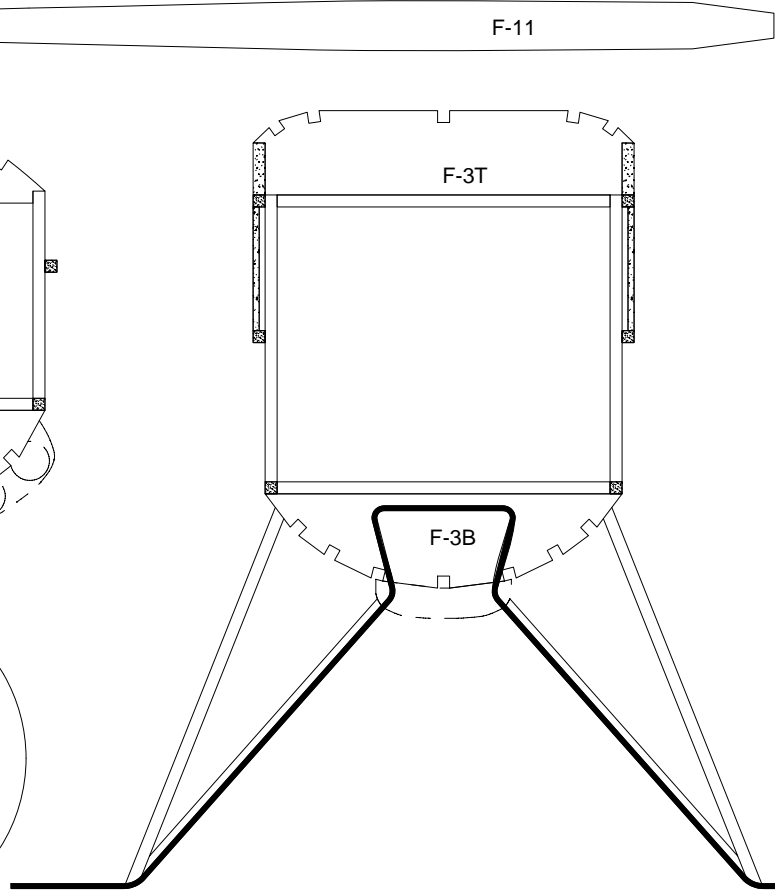
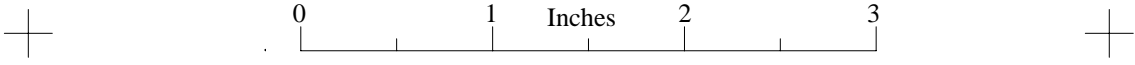
Motor peg from 1/8"

Right side windows - 1/32" balsa

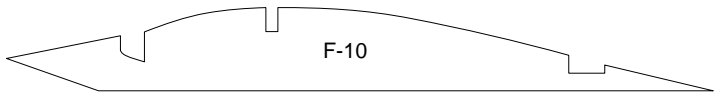


Left side windows - 1/32" balsa

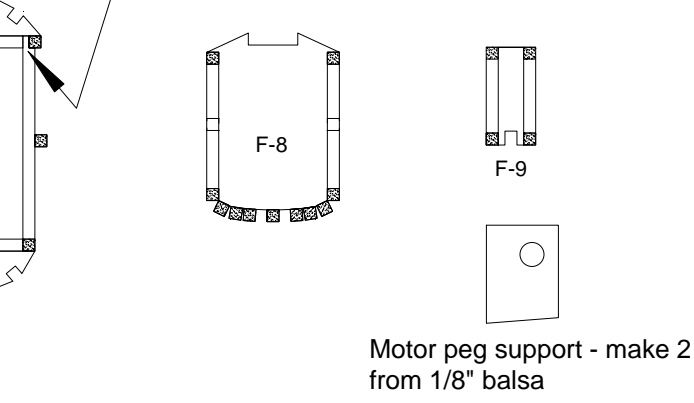




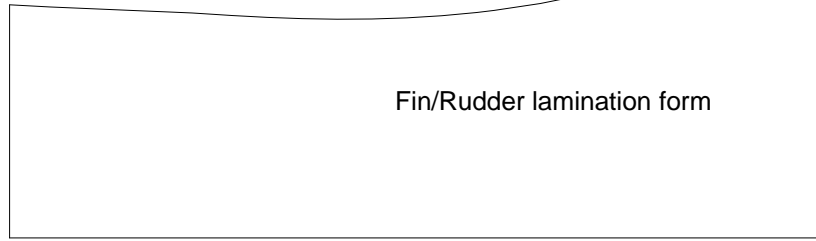
**Note:** Upright at station F-7 is notched at the top to 1/2 it's depth



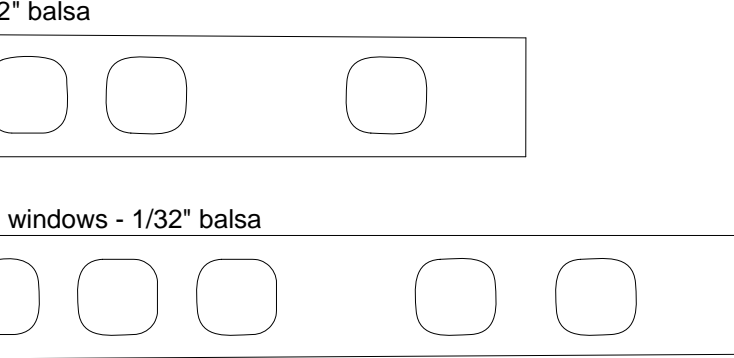
All formers are 1/16" balsa unless otherwise noted



Motor peg support - make 2 from 1/8" balsa

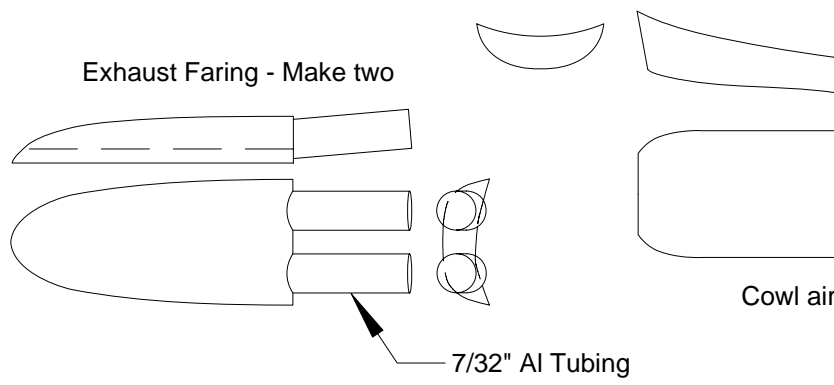


Fin/Rudder lamination form



2" balsa

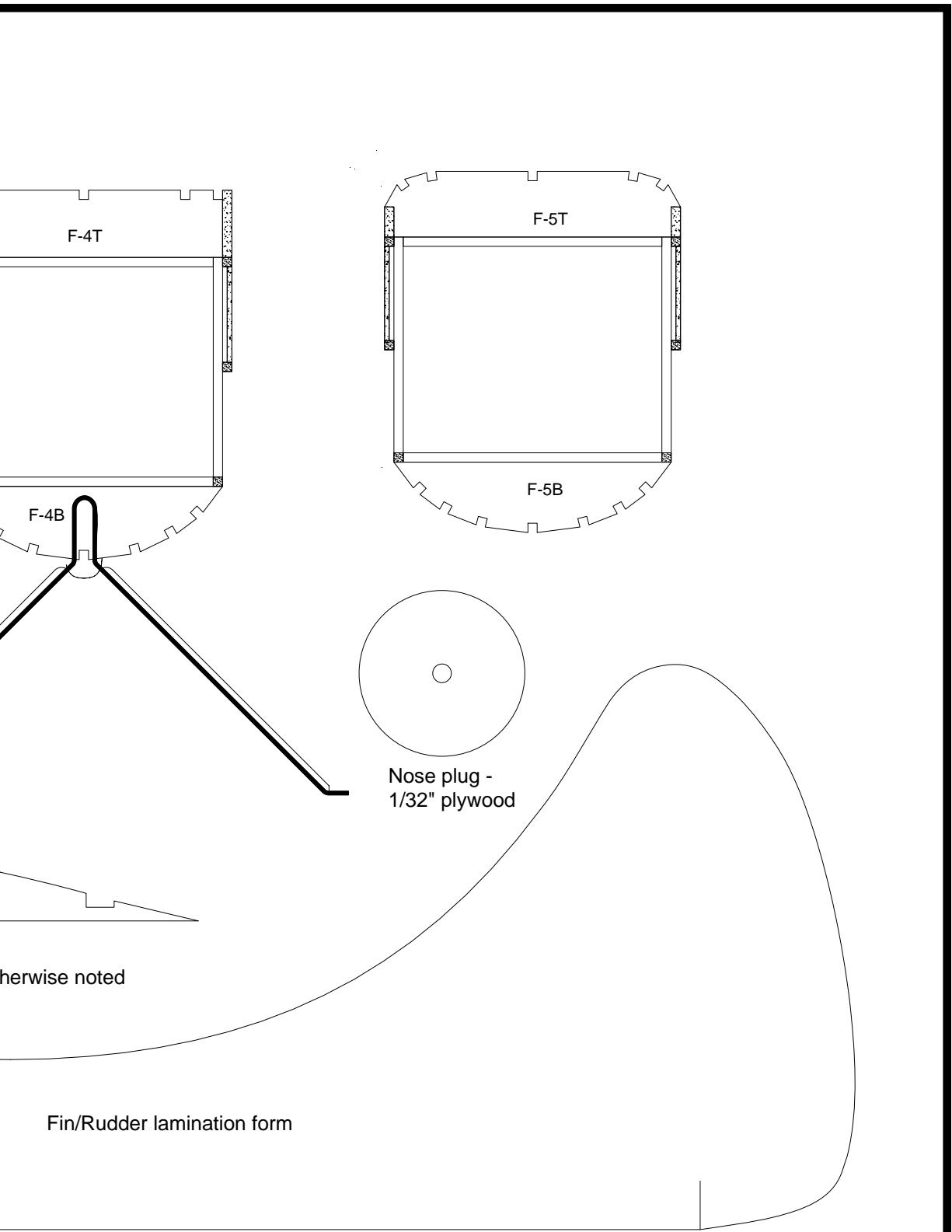
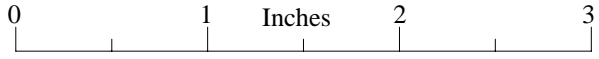
windows - 1/32" balsa



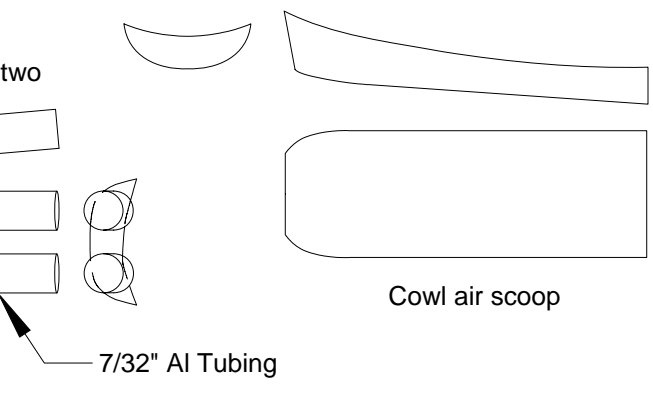
Exhaust Faring - Make two

Cowl air

7/32" Al Tubing



otherwise noted



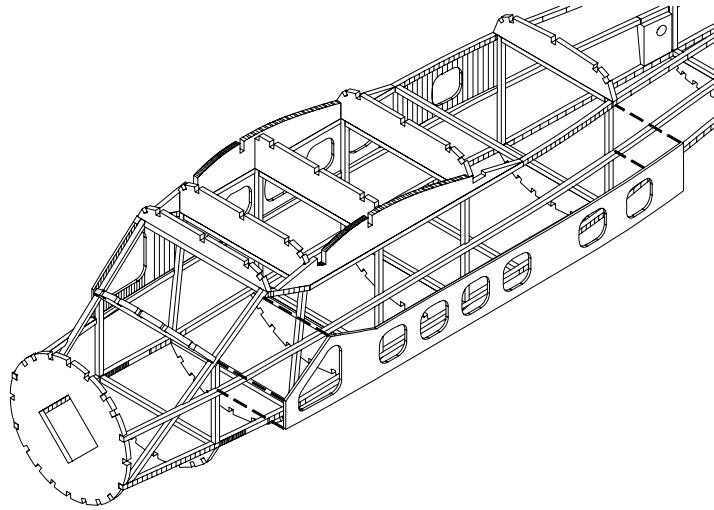
<b>DeHavilland Otter</b>
21.5" Span Rubber Power Scale Model
Original Design by Pres Bruning - Nov. '74
CAD Drawing by Paul Bradley - June 2010
Sheet 4 of 5



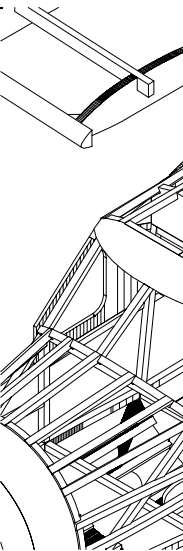
0 1 Inches 2 3



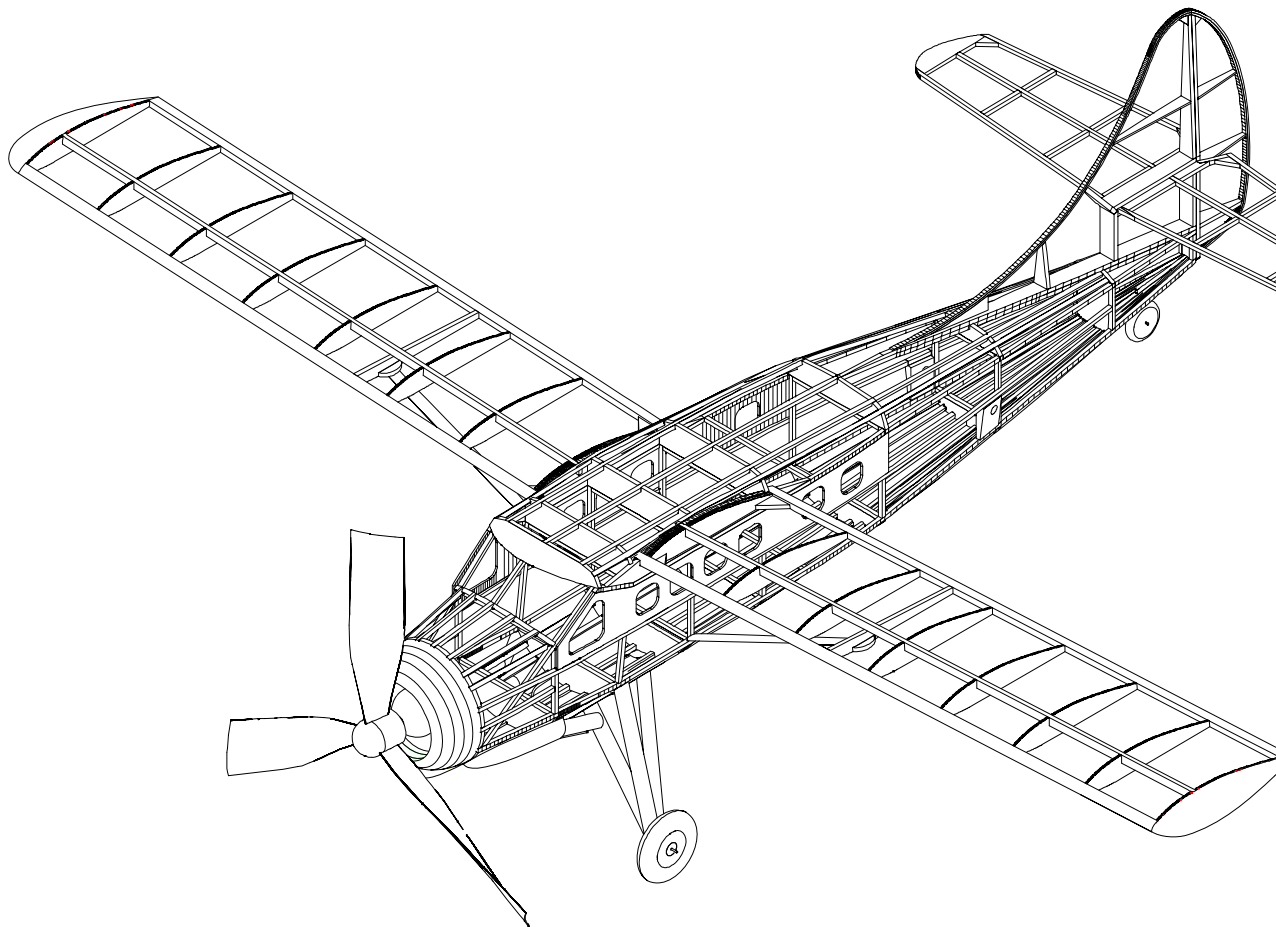
0



The side windows fit between the top and center longerons. Use 1/32" balsa shims between the window panels and the uprights.



Wing halves are located by the edge, and spaced former F-10. For spruce wing s

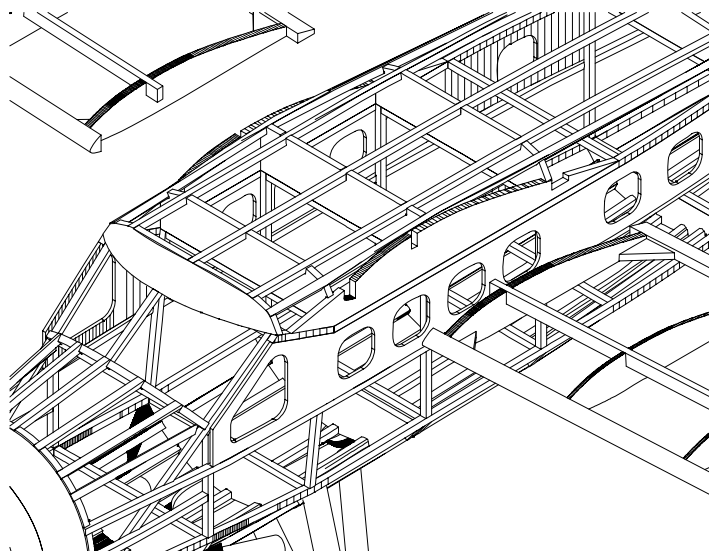
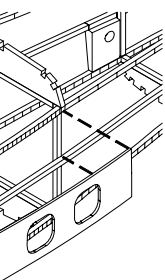




0 1 Inches 2 3



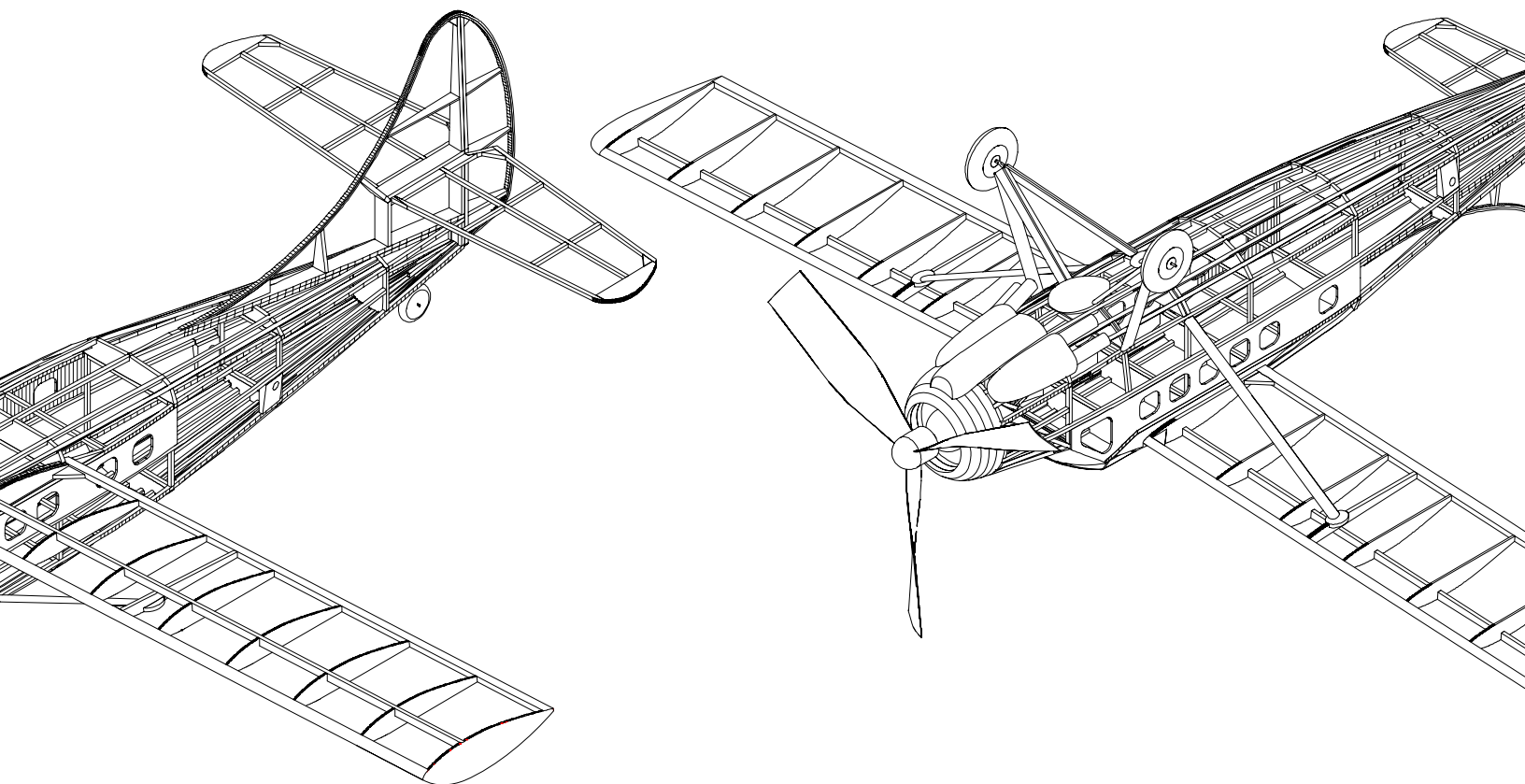
# Illustrations

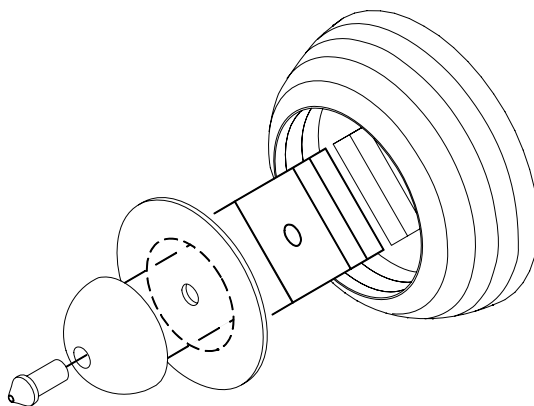
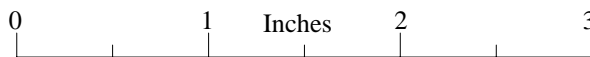


ns. Use  
rights.

Wing halves are glued to the fuselage sides. They are located by the extensions of the leading edge, trailing edge, and spar that fit into the appropriate slots in fuselage former F-10. Flight loads are carried by the 1/16" x 1/4" spruce wing struts.

The re  
plywoo  
parts C  
parts th  
fit insid  
former  
of the c  
spheric  
radial e  
or othe

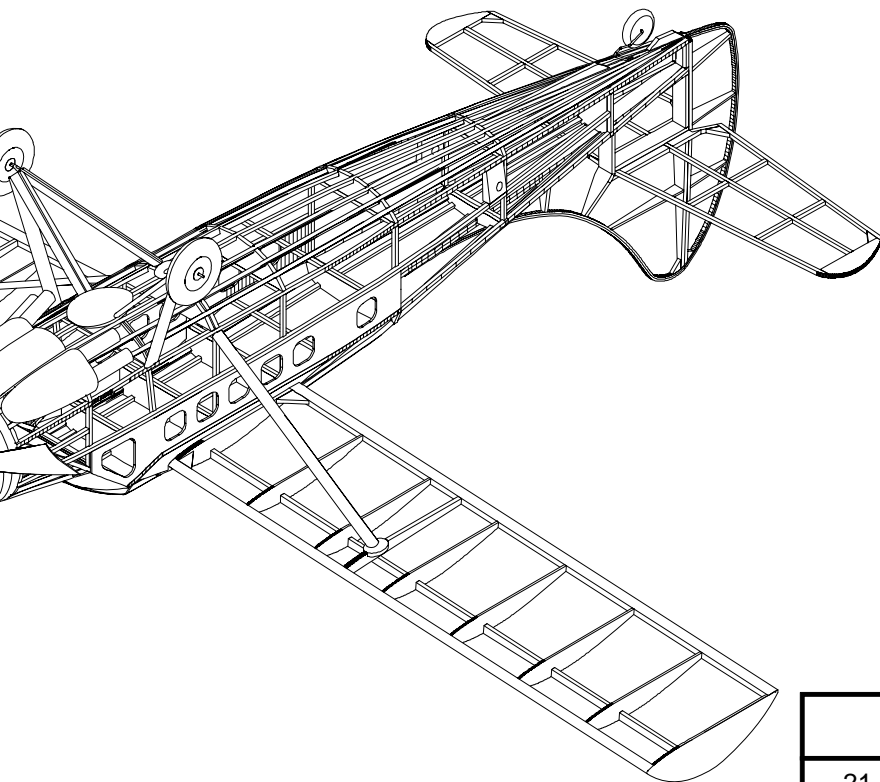




The removable nose plug is assembled from a 1/32" plywood disk that fits inside the opening in cowl parts C-2. It is retained in the nose by the square parts that are glued to the back of the disk and that fit inside the opening in cowl parts C-1 and fuselage former F-1. A spacer is needed on the forward face of the disk to provide prop clearance. The spacer is spherically shaped to simulate the front case of the radial engine used on the full scale aircraft. A Peck, or other suitable, bearing is used in the spacer.

When forming the nose ring do not fully cut out the square hole in parts C-1. Make cuts along each side but leave the corners un-cut. Laminate the parts making sure the square holes line up. Use a 2-56 bolt in the center hole to hold the laminations. Place the bolt in an electric drill and use the drill to turn the nose ring to shape. Once the nose ring is shaped cut out the square hole.

age



## DeHavilland Otter

21.5" Span Rubber Power Scale Model  
Original Design by Pres Bruning - Nov. '74  
CAD Drawing by Paul Bradley - June 2010

Sheet 5 of 5

