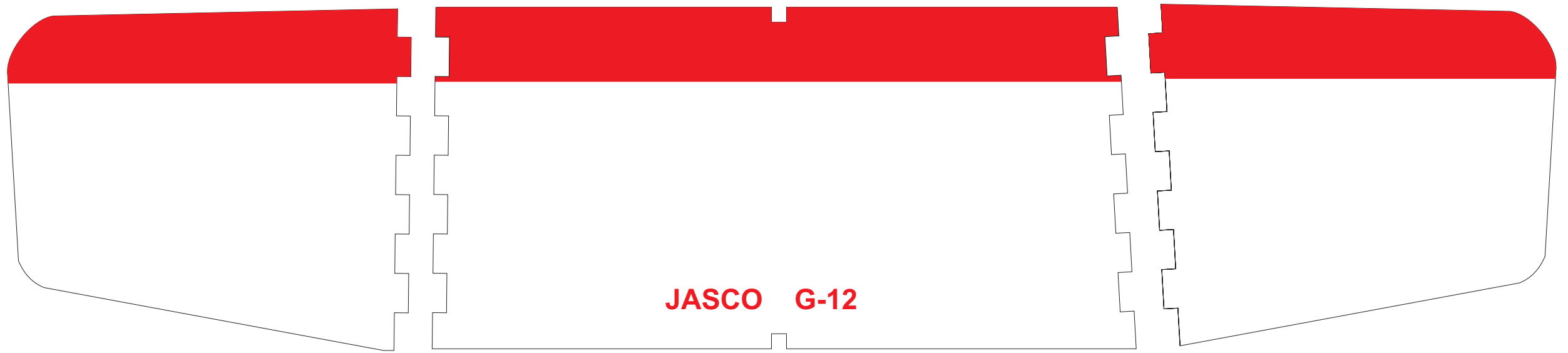


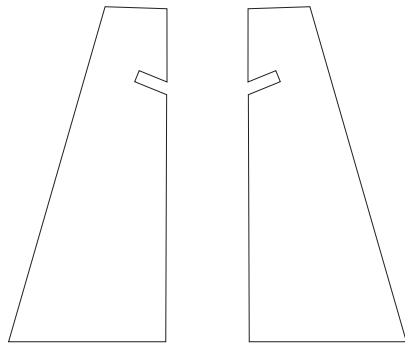


JASCO Fling-Hi G-12 Reproduction Drawing Package

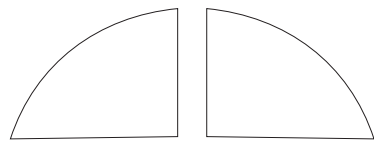
By Paul Bradley



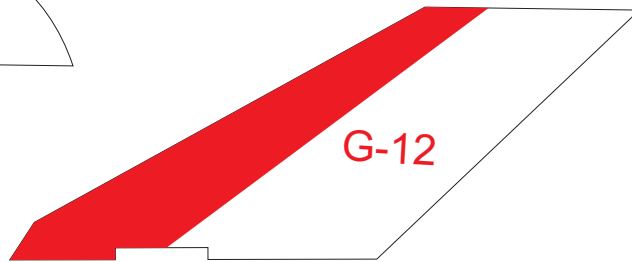
All flying surfaces are 1/16" balsa



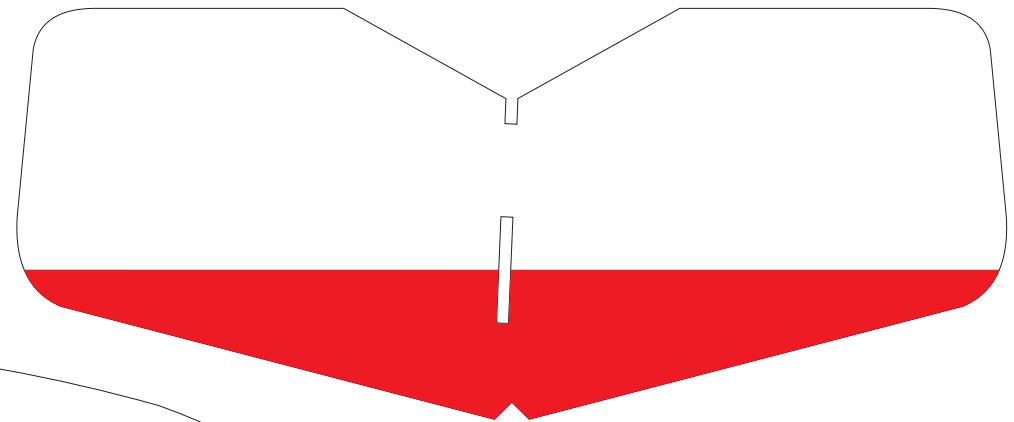
Dihedral Jigs



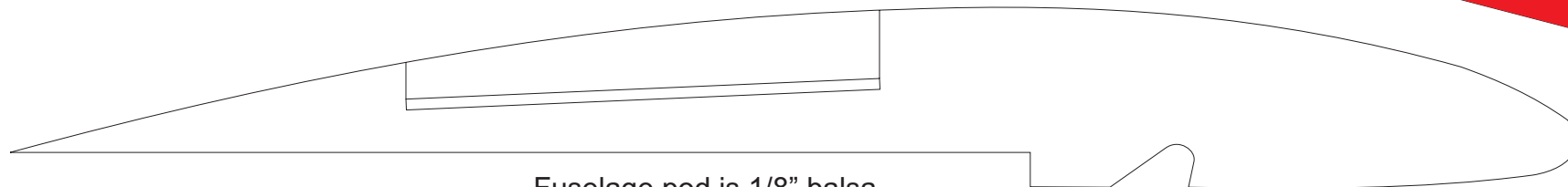
Gussets are 1/16" balsa



G-12



Tail Boom is made from a strip of 1/8"x3/16" Spruce 11" long



Fuselage pod is 1/8" balsa



JASCO Fling-Hi G-12

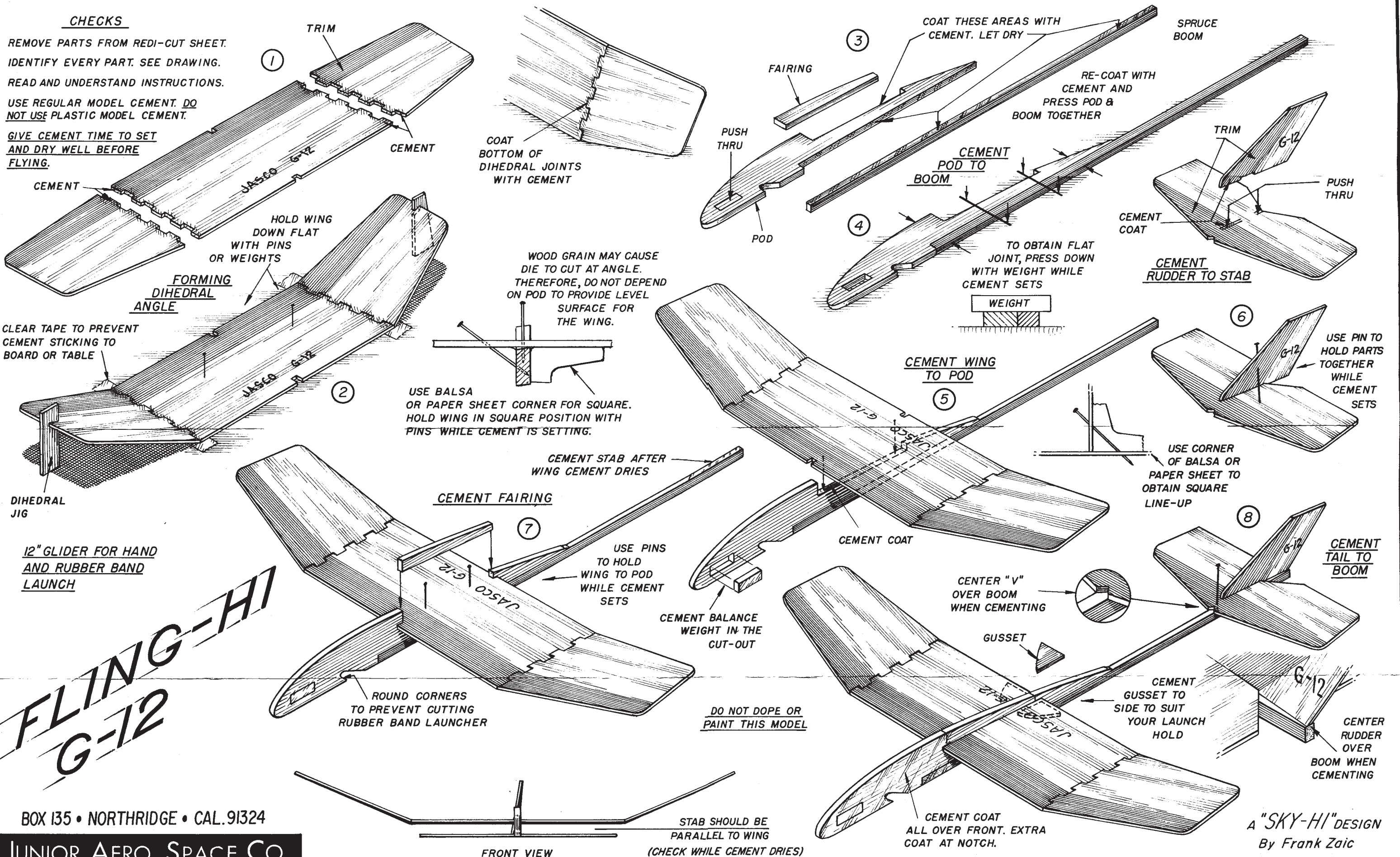


CHECKS

REMOVE PARTS FROM REDI-CUT SHEET.
IDENTIFY EVERY PART. SEE DRAWING.
READ AND UNDERSTAND INSTRUCTIONS.

USE REGULAR MODEL CEMENT. DO NOT USE PLASTIC MODEL CEMENT.

GIVE CEMENT TIME TO SET AND DRY WELL BEFORE FLYING.



**FLING-HI
G-12**

BOX 135 • NORTHRIDGE • CAL. 91324

JUNIOR AERO SPACE CO.

A "SKY-HI" DESIGN
By Frank Zaic

STRAIGHT AHEAD STALL OR GALLOP
 IF IT HAPPENS DURING THE FIRST FEW FLIGHTS: ADD MODELLING CLAY TO FRONT (1) UNTIL MODEL GLIDES FLAT. IT MAY NOW ALSO CIRCLE TO LEFT. SET RUDDER FOR MORE LEFT. IF THIS CAUSES SPIRAL DIVE, REMOVE SOME OF CLAY FROM FRONT UNTIL SMOOTH CIRCLE IS OBTAINED.

G-12 HAS BUILT-IN RUDDER AND WING SETTINGS FOR LEFT GLIDE. IN MOST CASES, ONLY A SLIGHT ADDITION OF CLAY NEEDED ON FRONT OR BACK FOR GOOD TRIM.

G-12 IS IDEAL FOR PRACTICING BASIC ADJUSTMENTS ON HAND LAUNCHED GLIDERS. TRY DIFFERENT RUDDER SETTINGS, WING WARPS AND CENTER OF GRAVITY CHANGES WITH CLAY. USE HAND & RUBBER LAUNCH.

LONG EXPOSURE TO HOT SUN OR MOISTURE MAY WARP THE MODEL AND CHANGE ADJUSTMENTS.

IF MODEL DOES NOT SPIRAL TO THIS LEVEL OR ZOOMS INTO A STALL: CHECK YOUR LAUNCH ANGLE (IT SHOULD BE ALMOST VERTICAL).—PUT MORE FORCE INTO LAUNCH. FINALLY, TRY SETTING RUDDER MORE FOR LEFT TURN.

ONE LONG OR TWO SHORT RUBBER BANDS INCLUDED IN KIT.—IF SHORT, LINK TOGETHER AS SHOWN FOR GOOD HAND GRIP. SEND 25¢ FOR EXTRA BANDS (8).

PEAK

LEFT CIRCLE GLIDE

TRANSITION

Jasco
 for Flying Models

STEEP SPIRAL GLIDE
 IF IT HAPPENS DURING FIRST FEW FLIGHTS: ADD CLAY TO FRONT OF STAB (*1). IF GLIDE THEN BECOMES SLOPPY, REDUCE LEFT RUDDER (*2) AND REMOVE CLAY FROM *1 SPOT.

KNOT RUBBER BAND AT MID-POINT. HOLD KNOT WITH LEFT HAND WHEN LAUNCHING. USE SLING MOTION FOR EXTRA ALTITUDE.

— WARNING —
 BEFORE YOU LAUNCH, LOOK AROUND AND BE SURE **NO ONE** IS IN FRONT OF YOU.—ANYTHING THAT IS LAUNCHED OR THROWN BECOMES A PROJECTILE.

RIGHT HAND LAUNCH HOLD

HOLD HERE WITH RIGHT HAND FOR RUBBER-BAND LAUNCH

LAUNCH AT 45° ANGLED ALMOST VERTICALLY

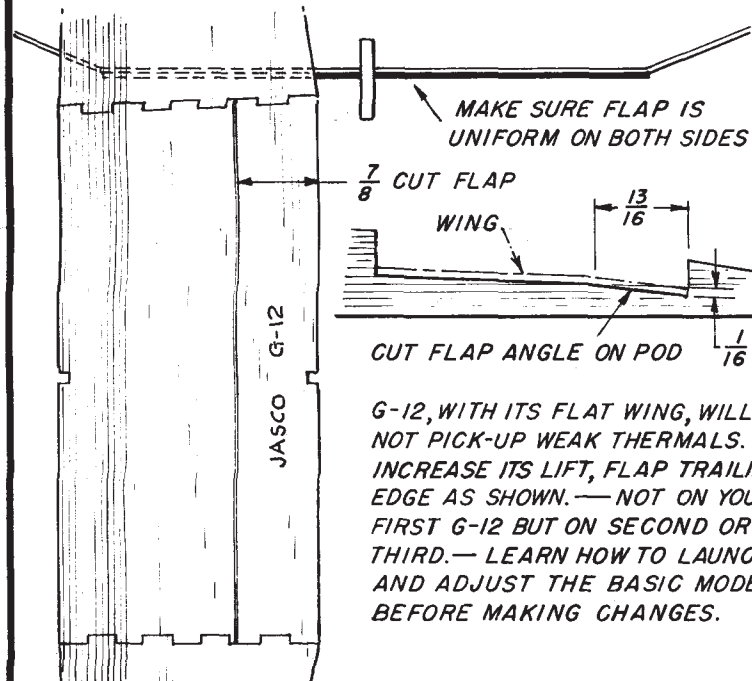
LAUNCH — RIGHT SPIRAL CLIMB

COAT BOTH SIDES WITH CEMENT

CEMENT PAPER-WIRE STRIP. NOTE OVERLAP.

RUDDER IS A BASIC CONTROL SURFACE

PAPER-WIRE STRIP HOLDS ADJUSTMENTS. CEMENT COATING PREVENTS RUDDER CRACKING WHEN BENT.



G-12, WITH ITS FLAT WING, WILL NOT PICK-UP WEAK THERMALS. TO INCREASE ITS LIFT, FLAP TRAILING EDGE AS SHOWN.—NOT ON YOUR FIRST G-12 BUT ON SECOND OR THIRD.—LEARN HOW TO LAUNCH AND ADJUST THE BASIC MODEL BEFORE MAKING CHANGES.



JASCO KID WELCOMES YOU TO THE EXCITING WORLD OF FREE FLIGHT!

J. Zaic