

**SE5a
FAC NO-CAL SCALE**

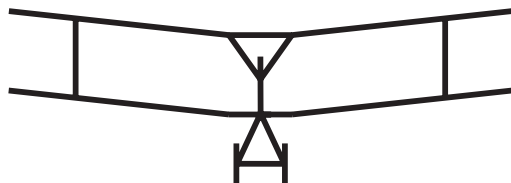
Designed and Drawn by
Paul Bradley
10/93

SHEET 1 OF 4
(From Internet Download)

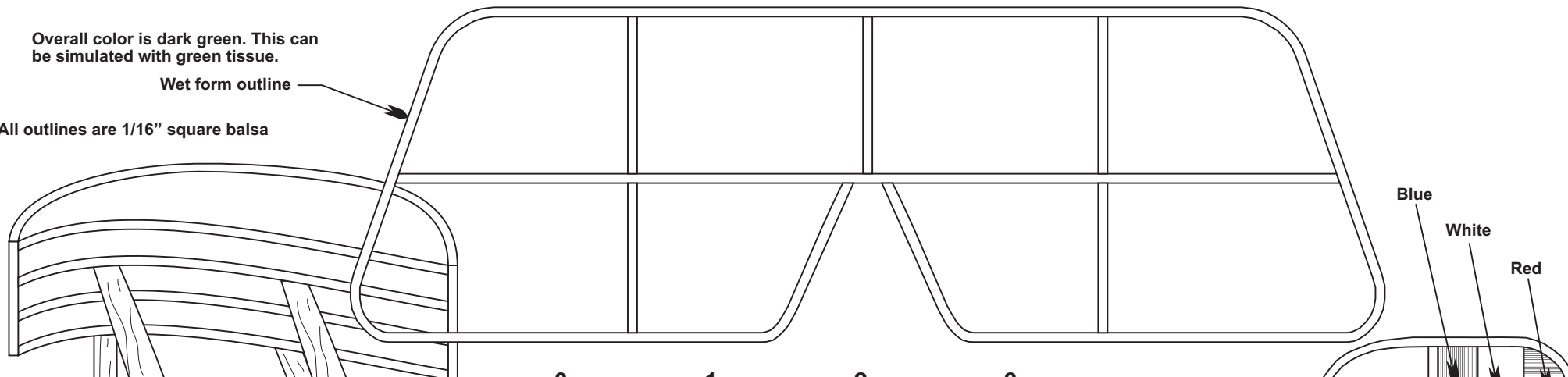
Overall color is dark green. This can
be simulated with green tissue.

Wet form outline

All outlines are 1/16" square balsa



Note: nose has been lengthened a bit from true scale
to minimize the need for ballast.



White letters

Wet form fin outline

All outlines are 1/16" balsa

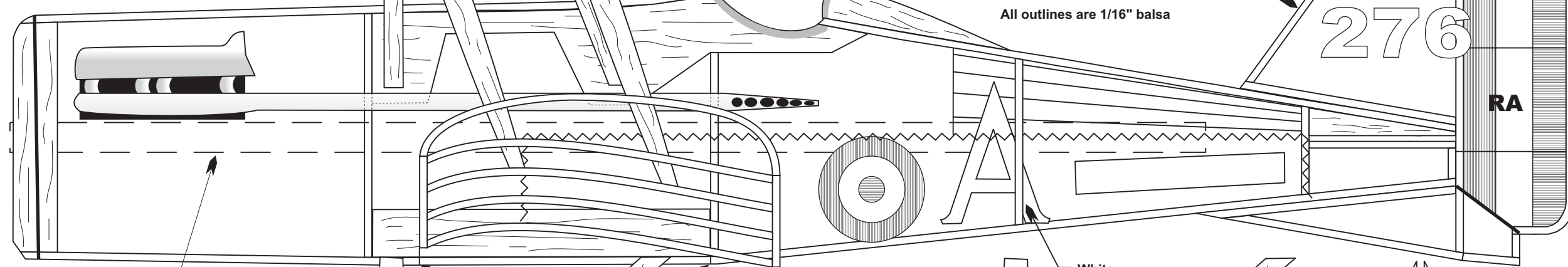
Blue

White

Red

D
276

RA



White

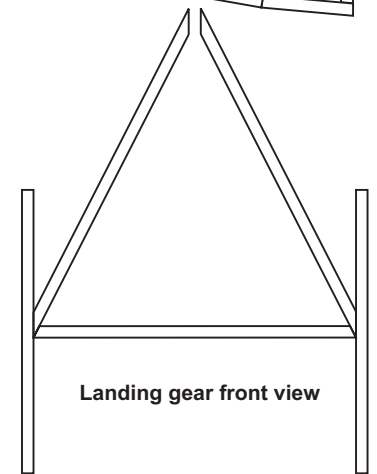
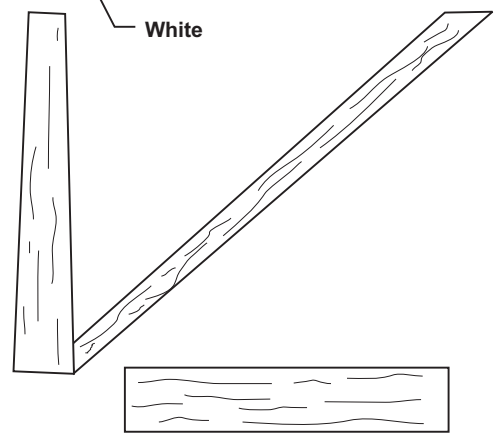
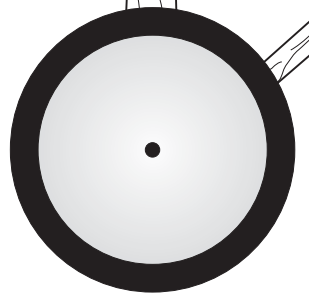
MOTOR STICK

1/8" X 1/2"
BLOCK INSERTED IN
EACH END OF THE
ROLLED TUBE.

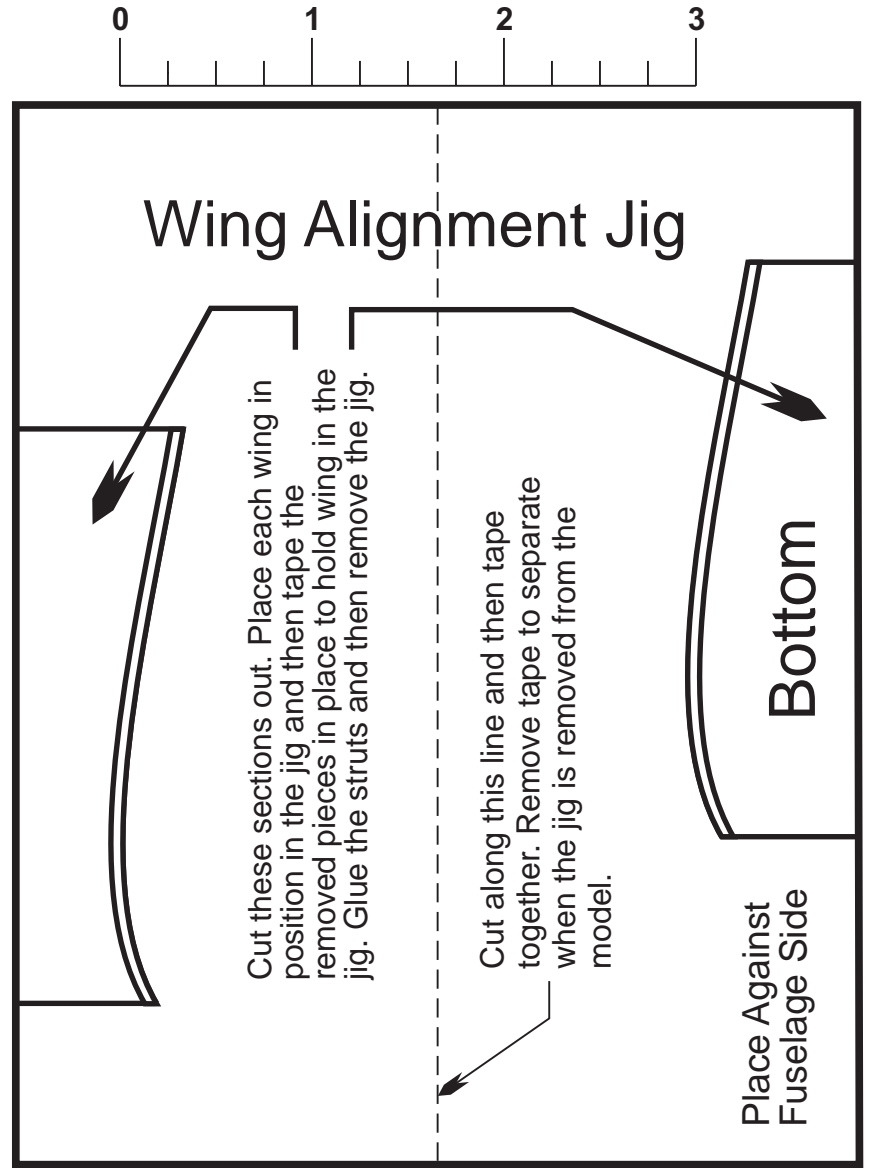
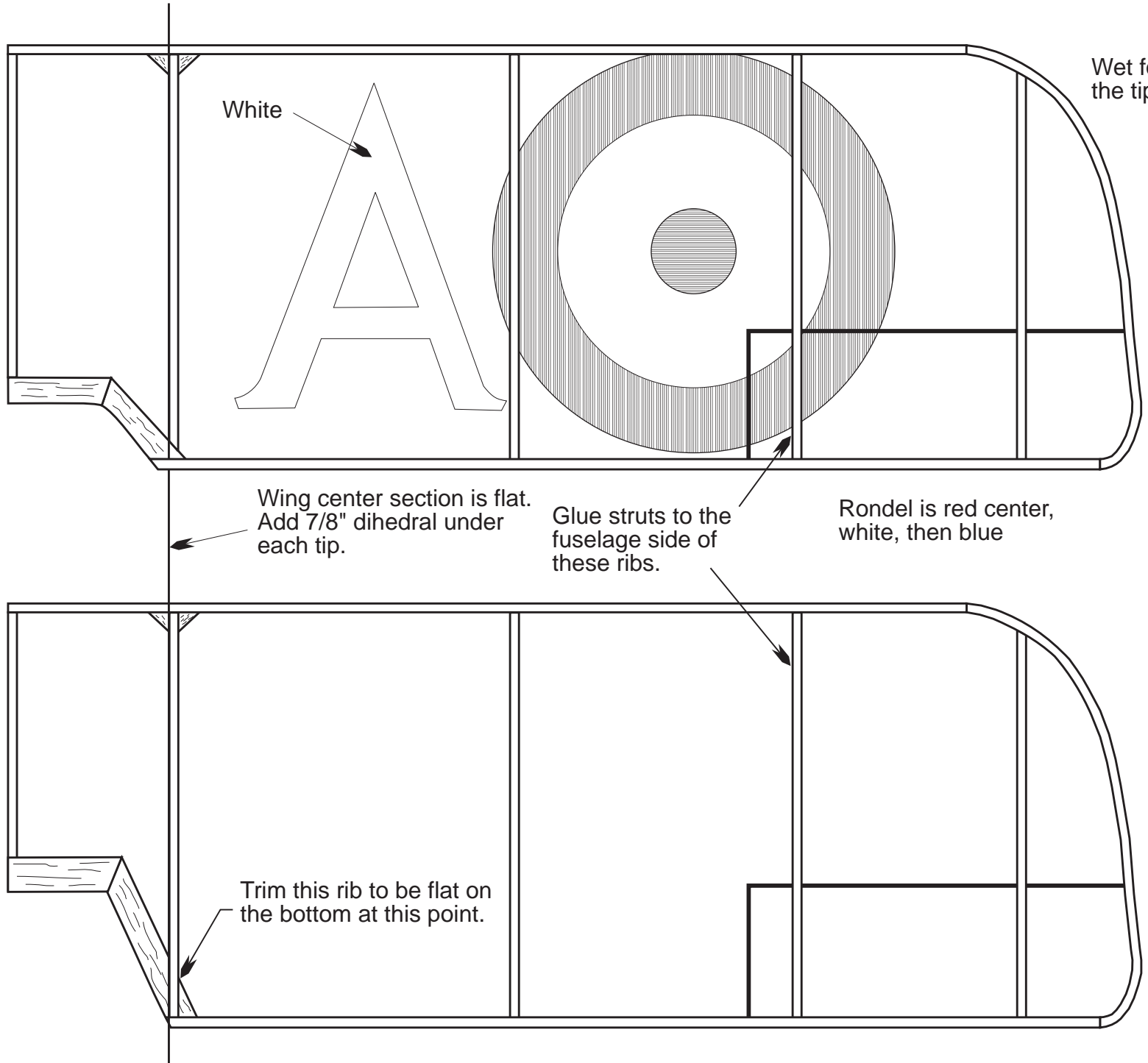
REAR HOOK IS .020 WIRE
INSERTED THROUGH THE
BALSA TUBE AND BLOCK
INSERT. MAKE AN "L"
BEND AND ATTACH WITH
CA.

Cut and remove this section
prior to installing the wing.
Glue back in place after the
wing is installed.

MAKE MOTOR STICK FROM ROLLED
1/32" BALSA FORMED ON A 1/4"
DOWEL. IT IS GLUED TO THE
UNCOVERED SIDE OF THE
FUSELAGE.



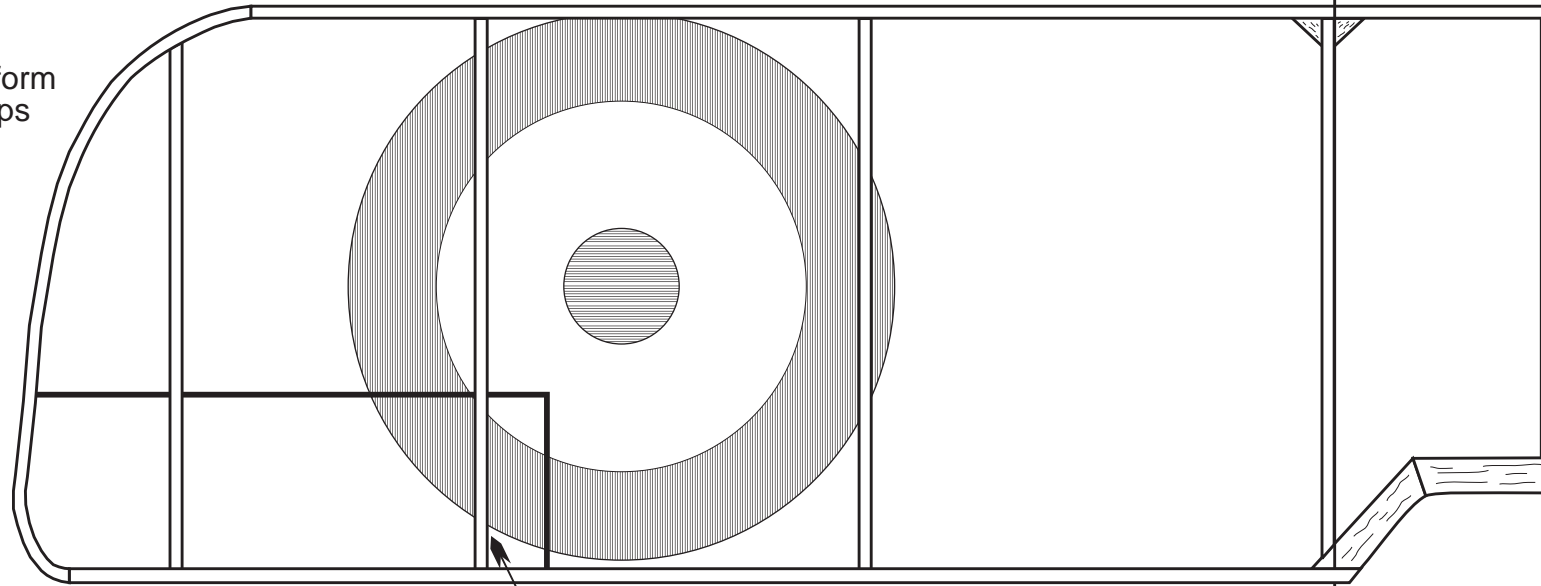
Landing gear front view



SE5a
FAC NO-CAL SCALE
 Designed and Drawn by
 Paul Bradley
 10/93
 SHEET 2 OF 4
 (From Internet Download)



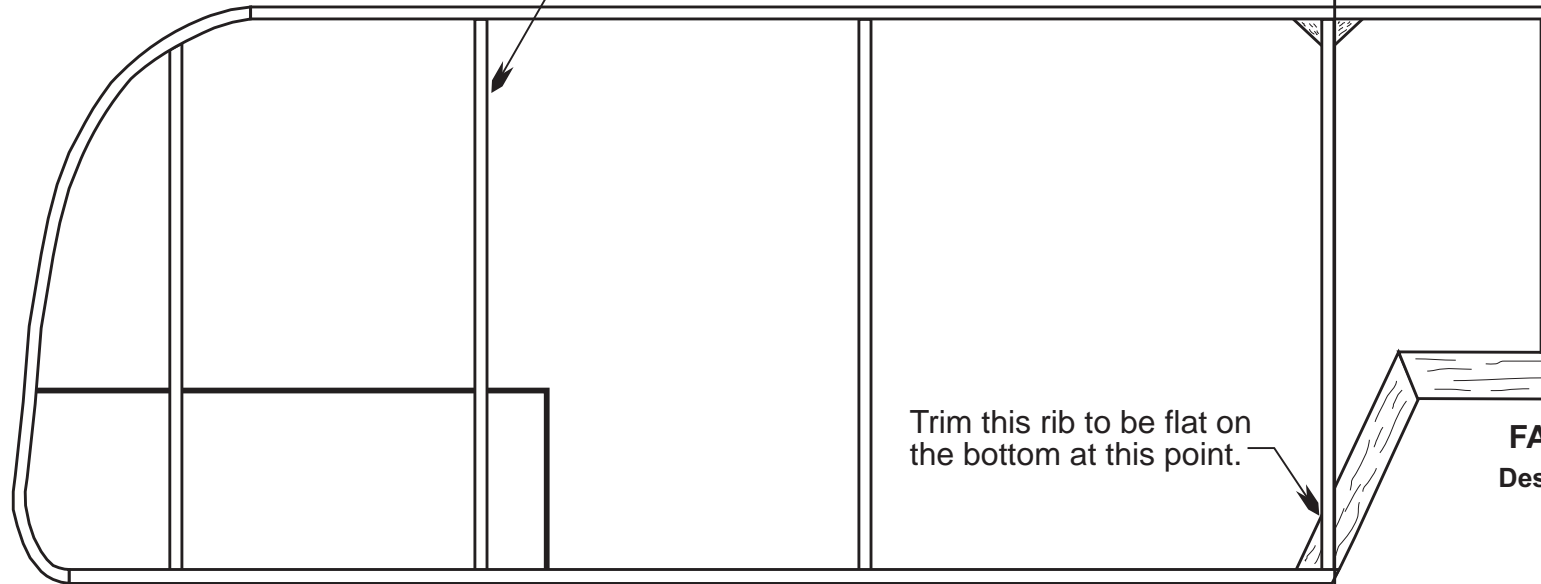
Wet form
the tips



Rondel is red center,
white, then blue

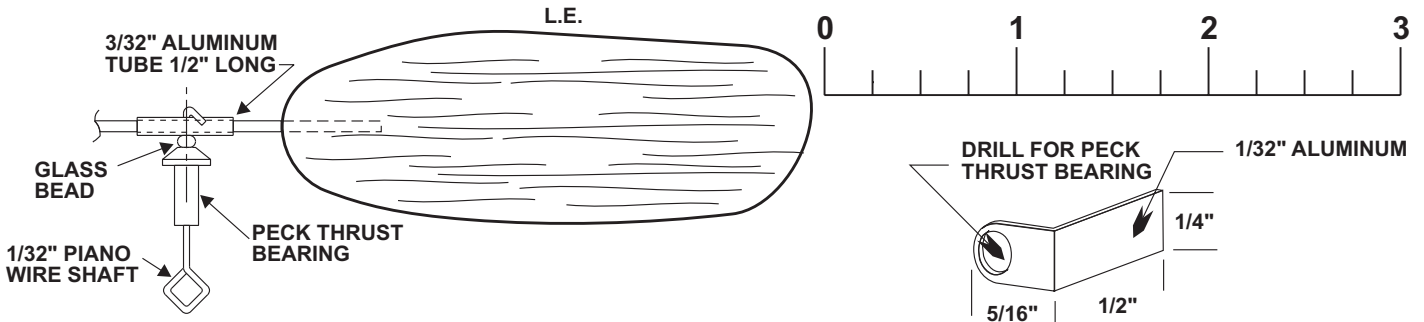
Glue struts to the
fuselage side of
these ribs.

Wing center section is flat.
Add 7/8" dihedral under
each tip.



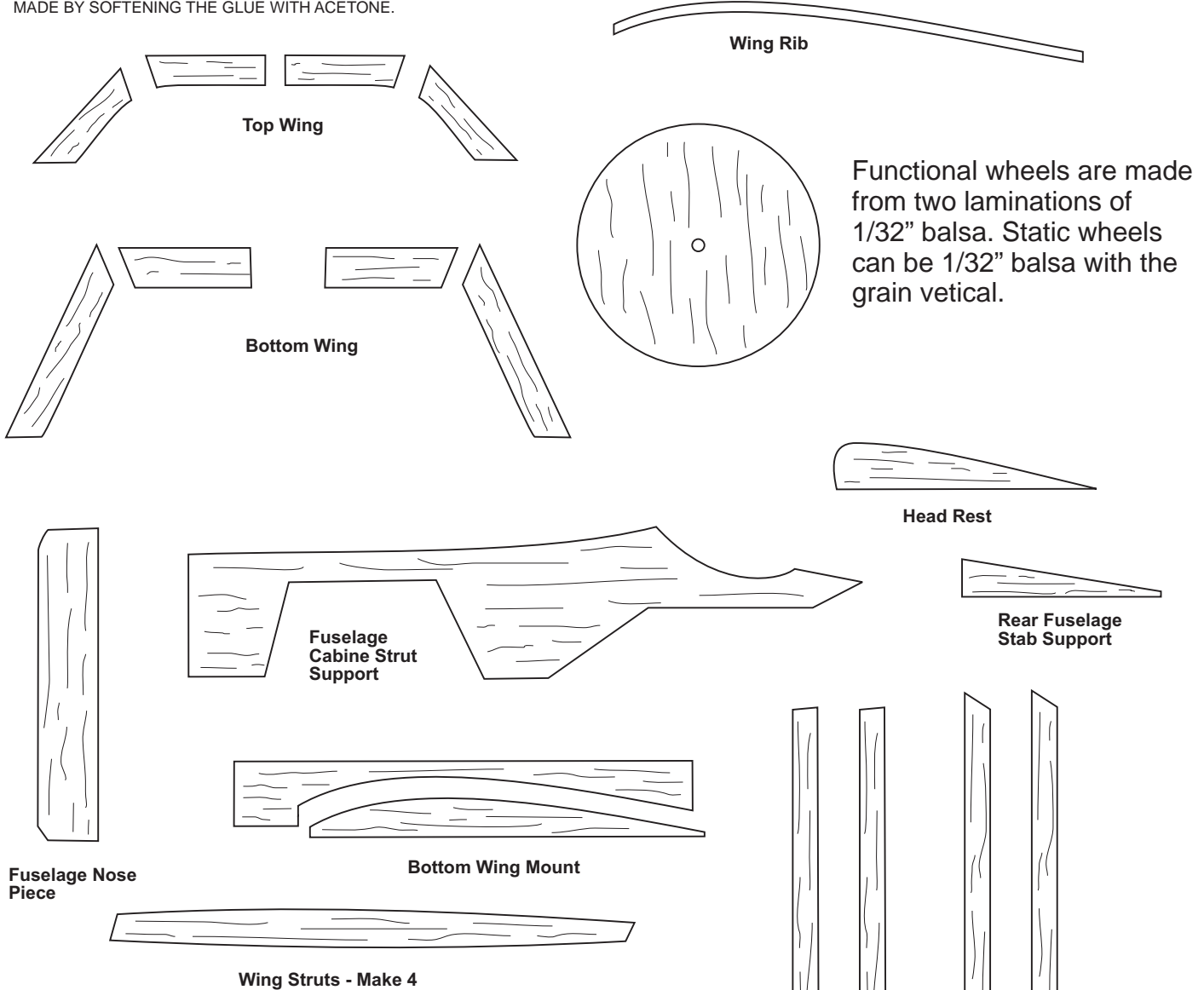
Trim this rib to be flat on
the bottom at this point.

SE5a
FAC NO-CAL SCALE
Designed and Drawn by
Paul Bradley
10/93
SHEET 3 OF 4
(From Internet Download)



PROP BLADES ARE 1/32" SHEET FORMED ON A 3" CYLINDER. SET EACH BLADE WITH THE LEADING EDGE 15 DEGREES LEFT FROM VERTICAL ON THE CYLINDER. MAKE 2 IDENTICAL BLADES FOR THE PROP ASSEMBLY. PROP SPARS ARE MADE FROM BAMBOO ROUNDED TO 1/16" DIAMETER. A GOOD SOURCE FOR BAMBOO IS SHISH KABOB SKEWERS. GLUE THE SPARS INTO THE ALUMINUM TUBE. USE REGULAR MODEL AIRPLANE CEMENT FOR THIS SO PITCH ADJUSTMENTS CAN BE MADE BY SOFTENING THE GLUE WITH ACETONE.

PROP HANGER DETAIL



All parts are cut from 1/16" balsa unless otherwise noted.

SE5a
FAC NO-CAL SCALE
 Designed and Drawn by
 Paul Bradley
 10/93

